



UNIVERSITY OF WEST GEORGIA

2022-2023 FACT BOOK



UNIVERSITY OF WEST GEORGIA

PREFACE

The University of West Georgia Fact Book is compiled by the Office of Institutional Effectiveness and Assessment (IEA). The Fact Book continues to provide reliable statistical data and summary information designed to answer the most frequently asked questions about the University. The Fact Book is based on sound institutional research and serves as a good first point of reference for institutional assessment, self-study, and planning. In total, this fact book provides the institutional profile as of Fall 2022 for a limited number of frequently requested data points.

IEA would like to sincerely thank everyone who provided data, information, and suggestions that contributed to the improvement and integrity of the Fact Book. This publication is reflective of the collaborative nature of our campus community and its dedication to engagement. Go West! Go Wolves!

IEA STAFF

Ms. Ashlesha Pawar, Executive Director of IEA

Ms. Elaine Harper, Institutional Research Analyst – Senior

Ms. Annette Pritchett, Institutional Research Analyst – Intermediate

Ms. Amanda Thomas, Director of Assessment

Ms. Rebecca de Mayo, Assessment Coordinator

IEA

Adamson Hall, Second floor

Phone: 678-839-4761

Website: westga.edu/iea

TABLE OF CONTENTS

Preface	1	ADMISSIONS	19
GENERAL INFORMATION	1	Admission Data	20-21
Vision Statement	2	Admission Trends.....	22
Mission Statement	2	Mean Scholastic Aptitude Test (SAT) Scores	23
UWG Values	3	Mean American College Testing (ACT) Scores	24
Accreditation	4	Mean High School Grade Point Average (GPA).....	25
Additional Accrediting or Approving Agencies	5	Top 25 Georgia Feeder High Schools	25
UWG Senior Administrative Officers	6	New Transfer Student Applications	26
UWG Deans of Colleges and Schools.....	7	Graduate Admissions	27
UWG Organization Charts		ENROLLMENT	29
President’s Division	8	Total Enrollment by Classification	30-31
President’s Division – University Athletics.....	9	First-Time First-Year Student Enrollment.....	32-33
Academic Affairs	10	Selected Student Characteristics – All Students..	34-35
Academic Affairs – Academic Units	11	Total Student Enrollment by Characteristics	36-37
Administrative Services	12	Enrolled Georgia Residents by County of Origin and	
Strategic Enrollment Management.....	13	Level.....	38-40
Business and Financial Services.....	14	GRADUATION	42
Business and Financial Services – Auxiliary		Total Graduates by Degree Level	44-45
Services	15	Retention and Graduation Rates	46-47
Student Affairs	16	FACULTY	48
University Advancement	17	Faculty Profile Overview.....	50-55

TABLE OF CONTENTS CONTINUED

College of Arts, Culture, and Scientific Inquiry.....56
College of Education57
Richards College of Business58
School of Communication, Film, and Media59
Tanner Health System School of Nursing.....60
University College61
Library62
Average Faculty Salary.....63
FINANCIALS 64
Operating Expenses..... 66-67
Expenses by Classification 68-69
University Revenue by Source70-71
Condensed Statement of Net Assets.....72-73
Student Tuition and Fees..... 74
Resident Instruction Expenditures 74-75



UNIVERSITY OF
WEST GEORGIA

UWG

UWG

UWG

GENERAL INFORMATION

VISION, MISSION, VALUES

UWG VISION

The University of West Georgia (UWG) aspires to be the best comprehensive university in America—**sought after as the best place to work, learn, and succeed!**

UWG MISSION

The mission of the University of West Georgia is to enable students, faculty, and staff to realize their full potential through academic engagement, supportive services, professional development, and a caring, student-centered community. UWG is committed to academic excellence and to community engagement, offering high-quality undergraduate, graduate, and community programs on campus, off campus, and online.

UWG, a charter member of the University System of Georgia (USG), is a comprehensive, SACSCOC level VI, public university, based in west Georgia with multiple instructional sites and a strong virtual presence. UWG supports students in their efforts to complete degrees in relevant programs, valuing liberal arts and professional preparation. Through effective and innovative teaching, experiential learning, scholarship, research, creative endeavor, and public service, UWG equips graduates to engage with and discover knowledge. UWG is dedicated to building on existing strengths and developing distinctive academic, research, and co-curricular programs and services that respond to economic development and identified regional, state, and global needs, thus empowering alumni to contribute responsibly and creatively to a complex 21st Century global society.



UWG VALUES

The institutional mission and daily operation of the University of West Georgia are guided by our values that support our vision to be the best place to work, learn, and succeed.

The value of **ACHIEVEMENT** is evident in our commitment to the academic and social success of our students, staff, and faculty.

The value of **CARING** is evident in our consistent concern and regard for our students, staff, and faculty as well as the larger communities where we live and whom we serve.

The value of **COLLABORATION** is evident in our commitment to shared governance, teamwork, and a cooperative spirit that shape our interactions with students, staff and faculty, and the communities we serve.

The value of **INCLUSIVENESS** is evident in our commitment to celebrating our diversity, our collaborative spirit, and creating a welcoming campus that is emotionally and physically safe for all.

The value of **INNOVATION** is evident in our commitment to fostering a learning atmosphere in which new methods and ideas consistent with our vision and mission are respected and rewarded.

The value of **INTEGRITY** is evident in our commitment to rigorous ethical standards in our classrooms and offices, in our conduct toward each other, and in service to our communities.

The value of **SUSTAINABILITY** is evident in our obligation to maintaining ecological balance in our planning and operations that make possible for future generations the same or better quality of opportunities for success available to present employees and students.



The value of **WISDOM** is evident in our commitment to teaching and learning that emphasizes knowledge for the purpose of positively transforming the lives of our employees and students, as well as improving the world in which we live.

ACCREDITATION

The University of West Georgia is accredited by the Southern Association of Colleges and Schools Commission on Colleges (SACSCOC) to award associate, baccalaureate, master's, educational specialist, and doctorate degrees. The University of West Georgia also may offer credentials such as certificates and diplomas at approved degree levels. Questions about the accreditation of the University of West Georgia may be directed in writing to the Southern Association of Colleges and Schools Commission on Colleges at 1866 Southern Lane, Decatur, GA 30033-4097, by calling (404) 679-4500, or by using information available on SACSCOC's website (www.sacscoc.org).

The purpose of publishing the Commission's contact information is to enable interested constituents to learn about the accreditation status of the institution, file a third-party comment at the time of the institution's decennial review, or file a complaint against the institution for alleged non-compliance with a standard or requirements. However, inquiries about UWG, such as admission requirements, financial aid, education programs, etc., should be addressed directly with UWG—not via the Commission's office.



ADDITIONAL ACCREDITING OR APPROVING AGENCIES INCLUDE:

- Accrediting Council on Education in Journalism and Mass Communications
- American Chemical Society
- Association to Advance Collegiate Schools of Business (International)
- Council for Accreditation of Counseling and Related Educational Programs
- Council on Academic Accreditation in Audiology and Speech-Language Pathology
- Commission on Collegiate Nursing Education
- Computing Accreditation Commission of ABET
- Georgia Board of Nursing
- National Association of Schools of: Arts and Design; Music; Theatre
- Network of Schools of Public Policy, Affairs, and Administration

EXECUTIVE DIRECTOR OF ACCREDITATION AND QUALITY ENHANCEMENT:

Dr. Kevin Gwaltney

INSTITUTIONAL MEMBERSHIPS

Organizations in which UWG holds institutional membership include the American Council on Education, the American Association of State Colleges and Universities, the American Association of Colleges for Teacher Education, the Association for the Assessment of Learning in Higher Education, the Georgia Association of Colleges and Employers, and the National Collegiate Honors Council.

UWG SENIOR ADMINISTRATIVE OFFICERS

SENIOR LEADERSHIP	
President	Dr. Brendan B. Kelly
Provost and Senior Vice President for Academic Affairs	Dr. Jon Preston
Associate Vice President and Chief of Staff to the President	Dr. Russell Crutchfield
Vice President for Administrative Services	Vacant
Vice President for Business and Financial Services	Mr. Scott McElroy
Vice President for Student Affairs	Dr. André Fortune
Vice President for Strategic Enrollment Management	Ms. Kimberly Scranage
Vice President for University Advancement	Dr. Meredith Brunen
General Counsel	Ms. Kristi Carman
Vice Provost and Professor	Dr. Ralitsa Akins

UWG DEANS OF COLLEGES AND SCHOOLS

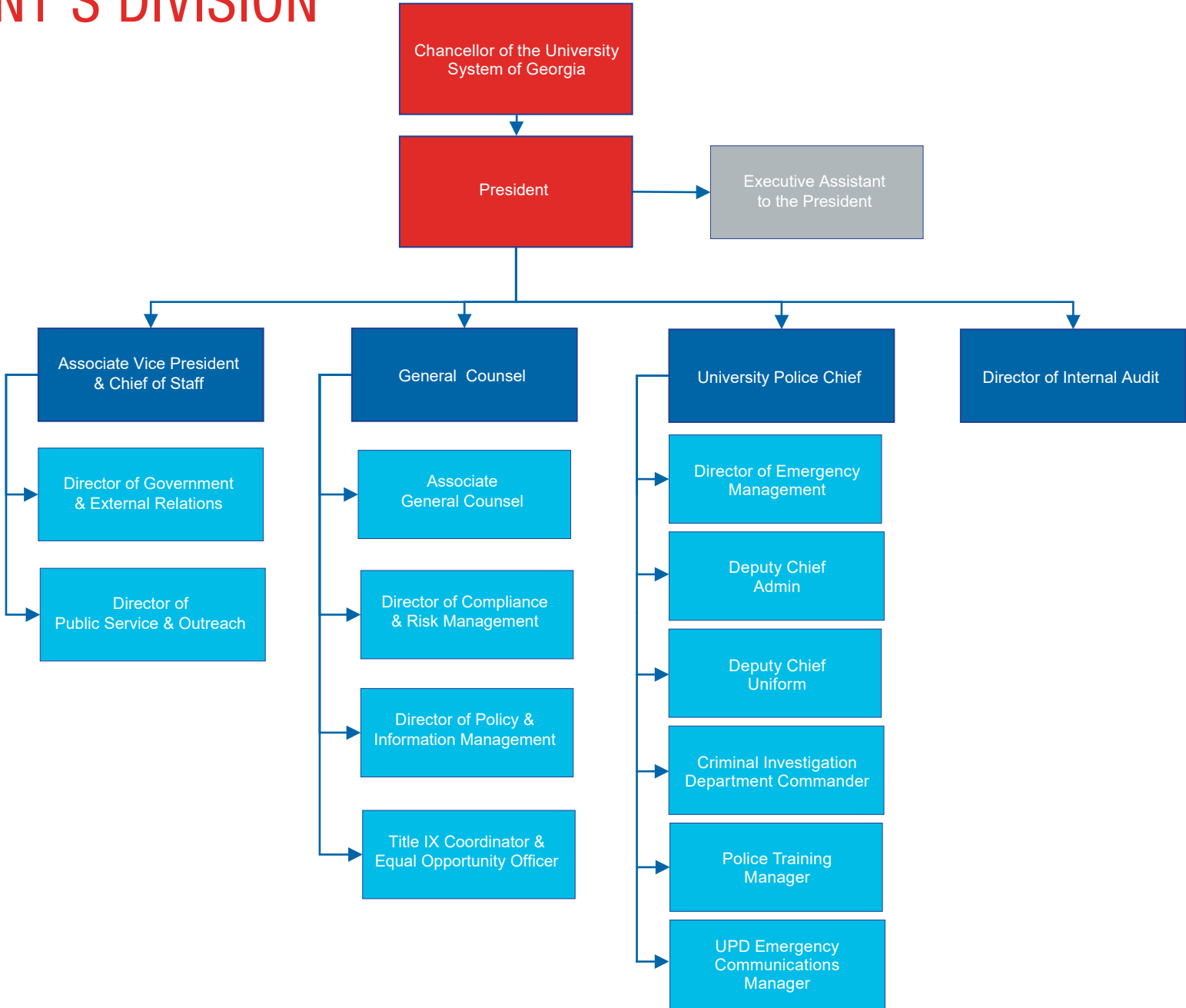
ACADEMIC LEADERSHIP

DEANS

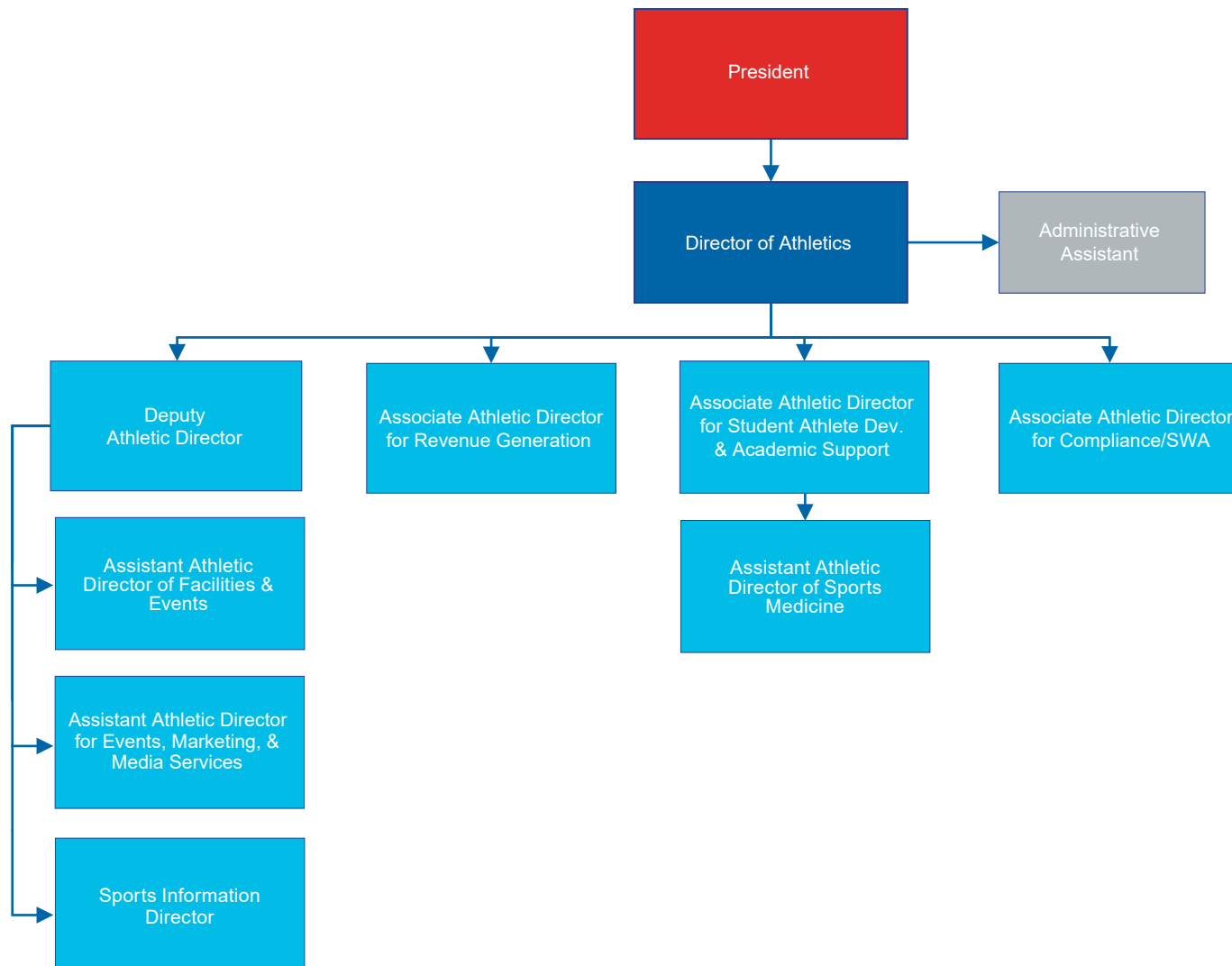
College of Arts, Culture, and Scientific Inquiry	Dr. Pauline Gagnon
College of Education	Dr. Mike Dishman
Richards College of Business	Dr. Christopher Johnson
University College and Honors College	Dr. Karen Owen
Tanner Health System School of Nursing	Dr. Jennifer Schuessler
School of Communication, Film, and Media	Dr. Bradford Yates
University Libraries	Dr. Andrea Stanfield
Graduate School	Dr. Matt Varga
Extended Learning and eCampus	Dr. Jason Huett

UWG ORGANIZATION

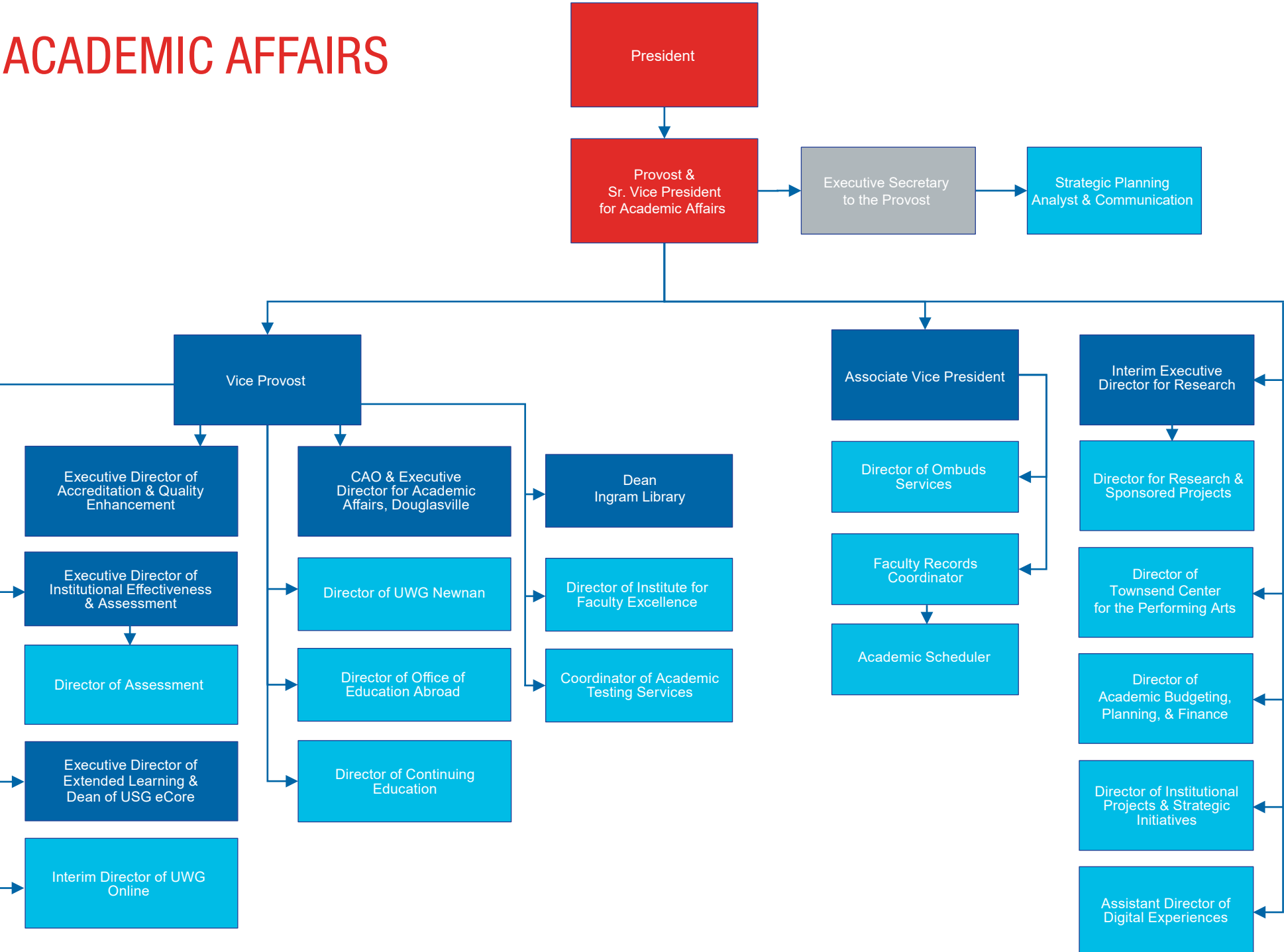
PRESIDENT'S DIVISION



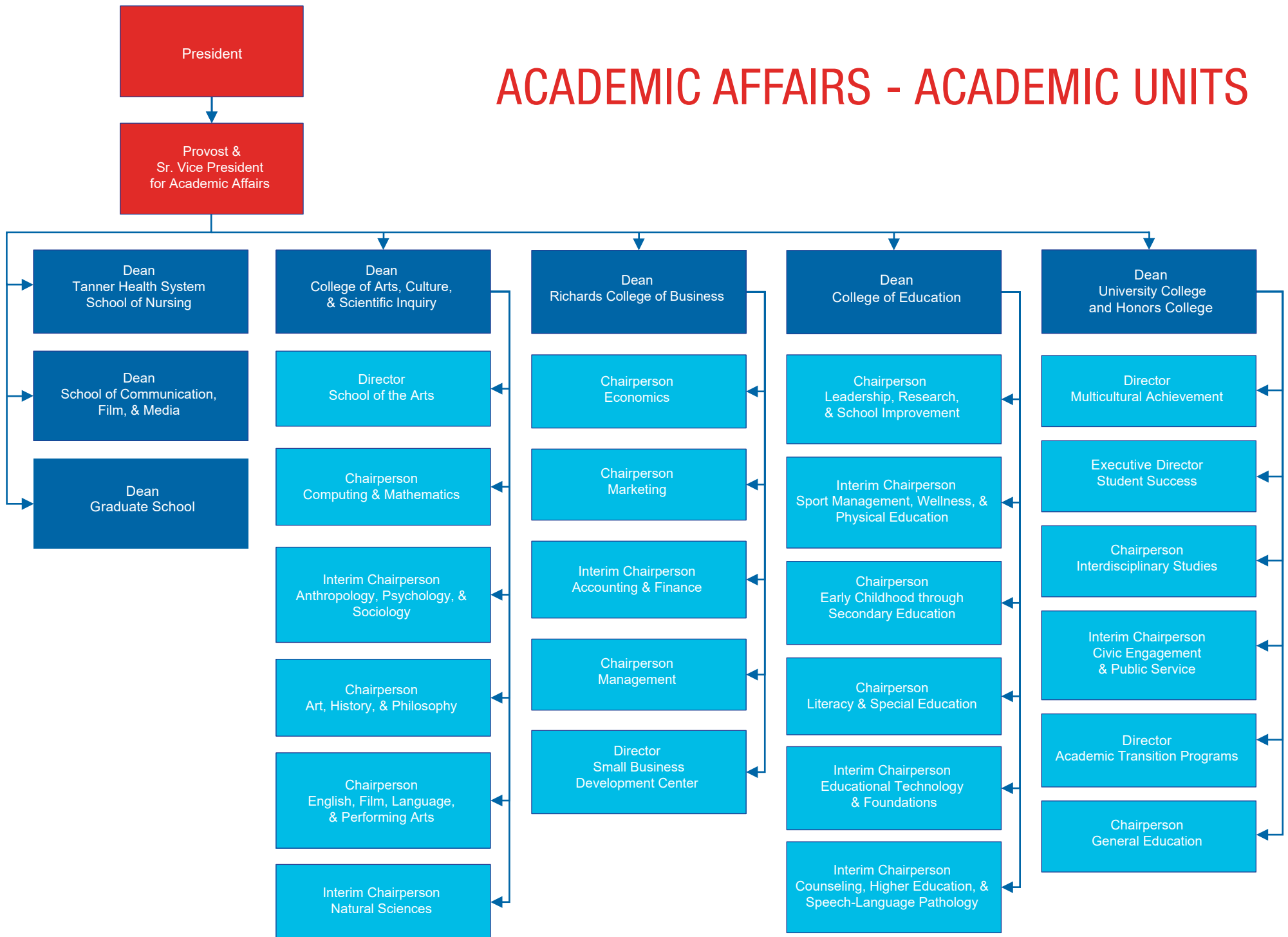
PRESIDENT'S DIVISION - UNIVERSITY ATHLETICS



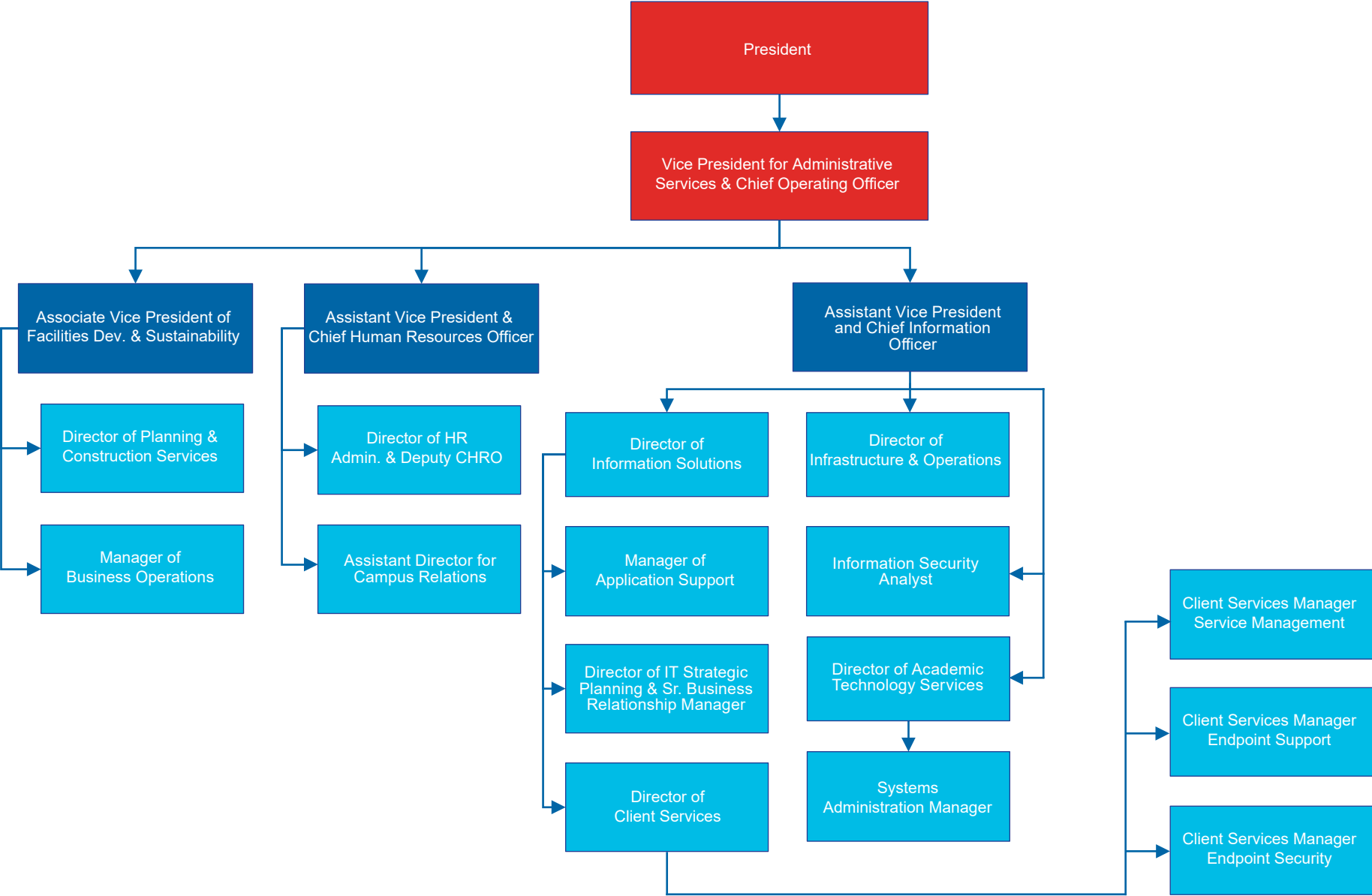
ACADEMIC AFFAIRS



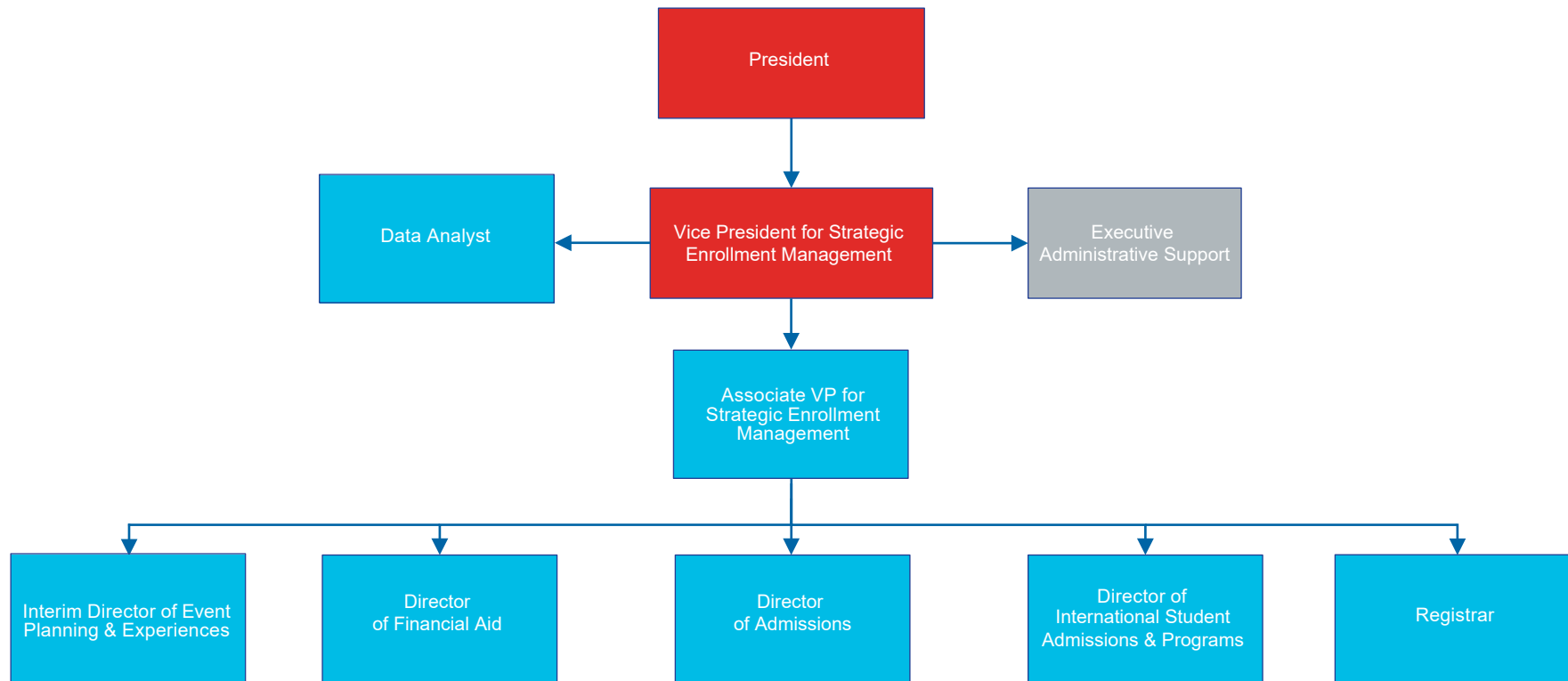
ACADEMIC AFFAIRS - ACADEMIC UNITS



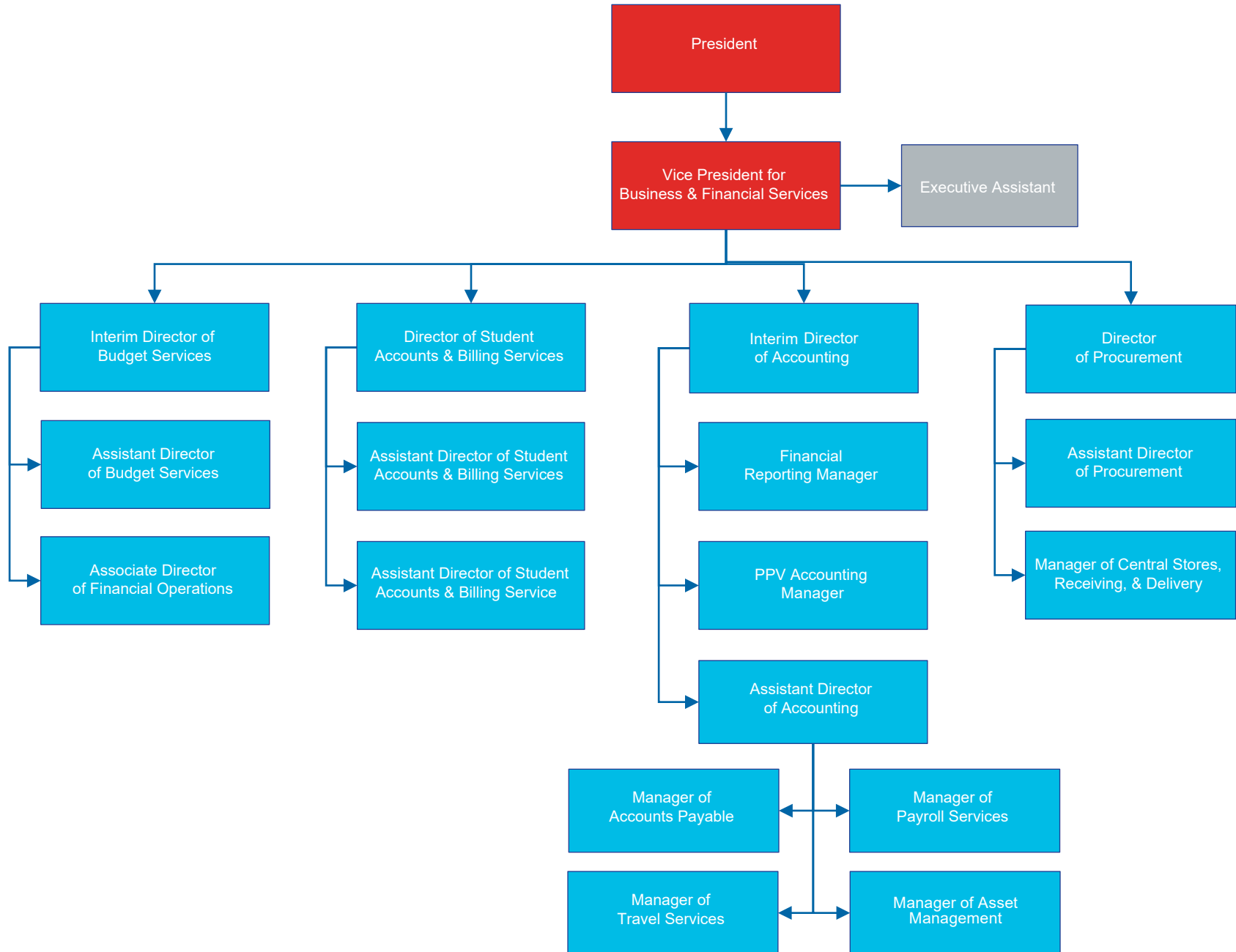
ADMINISTRATIVE SERVICES



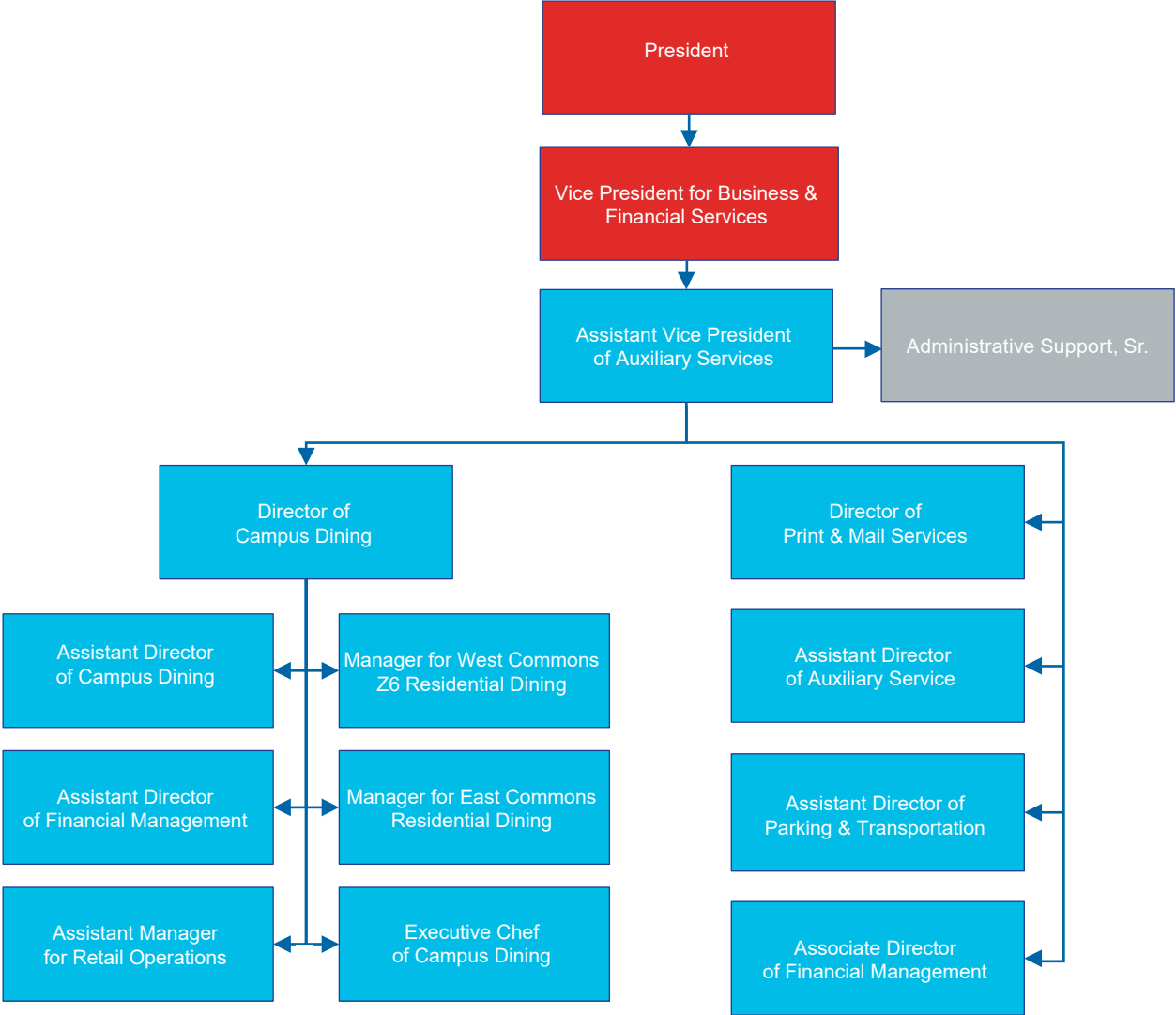
STRATEGIC ENROLLMENT MANAGEMENT



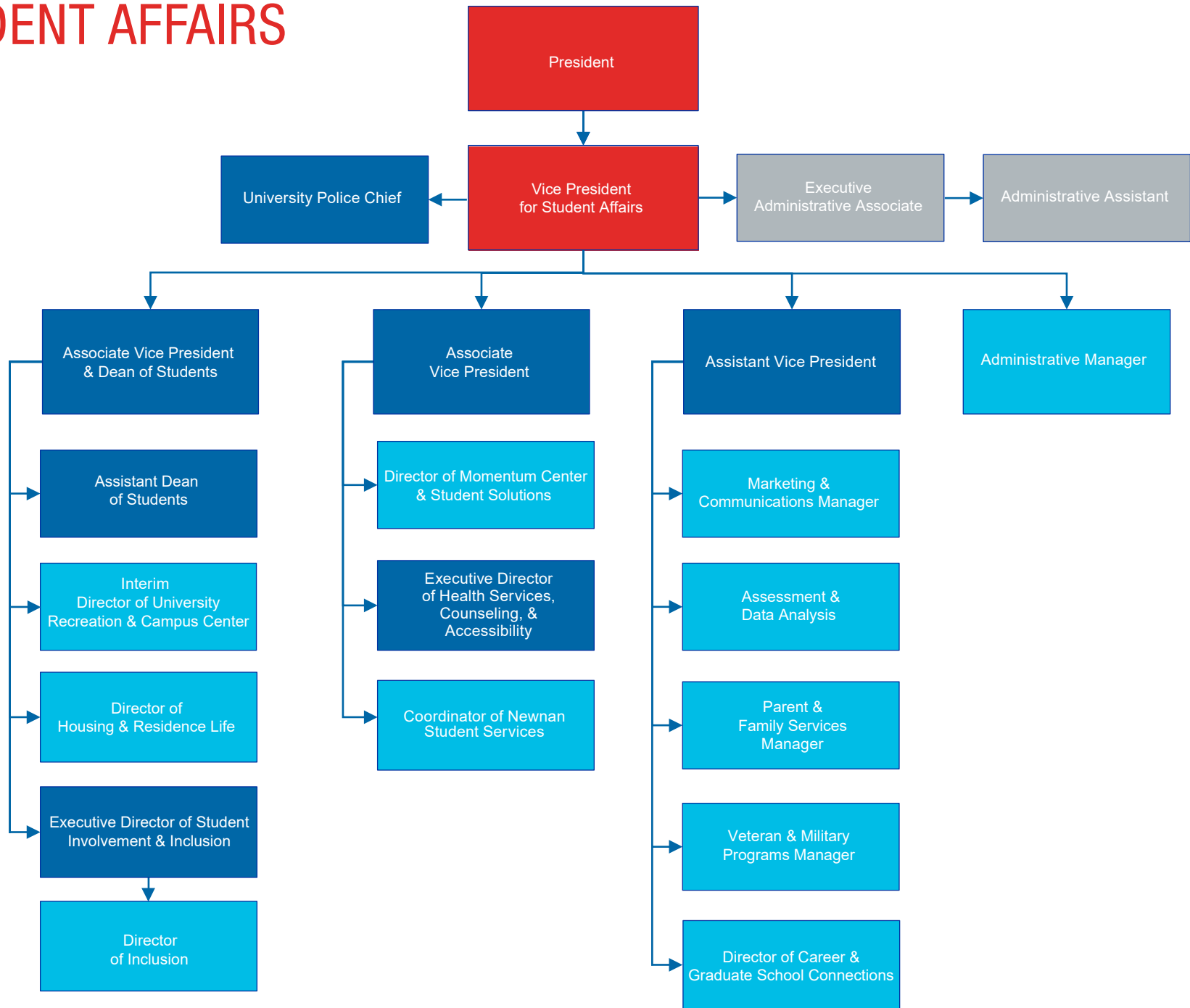
BUSINESS AND FINANCIAL SERVICES



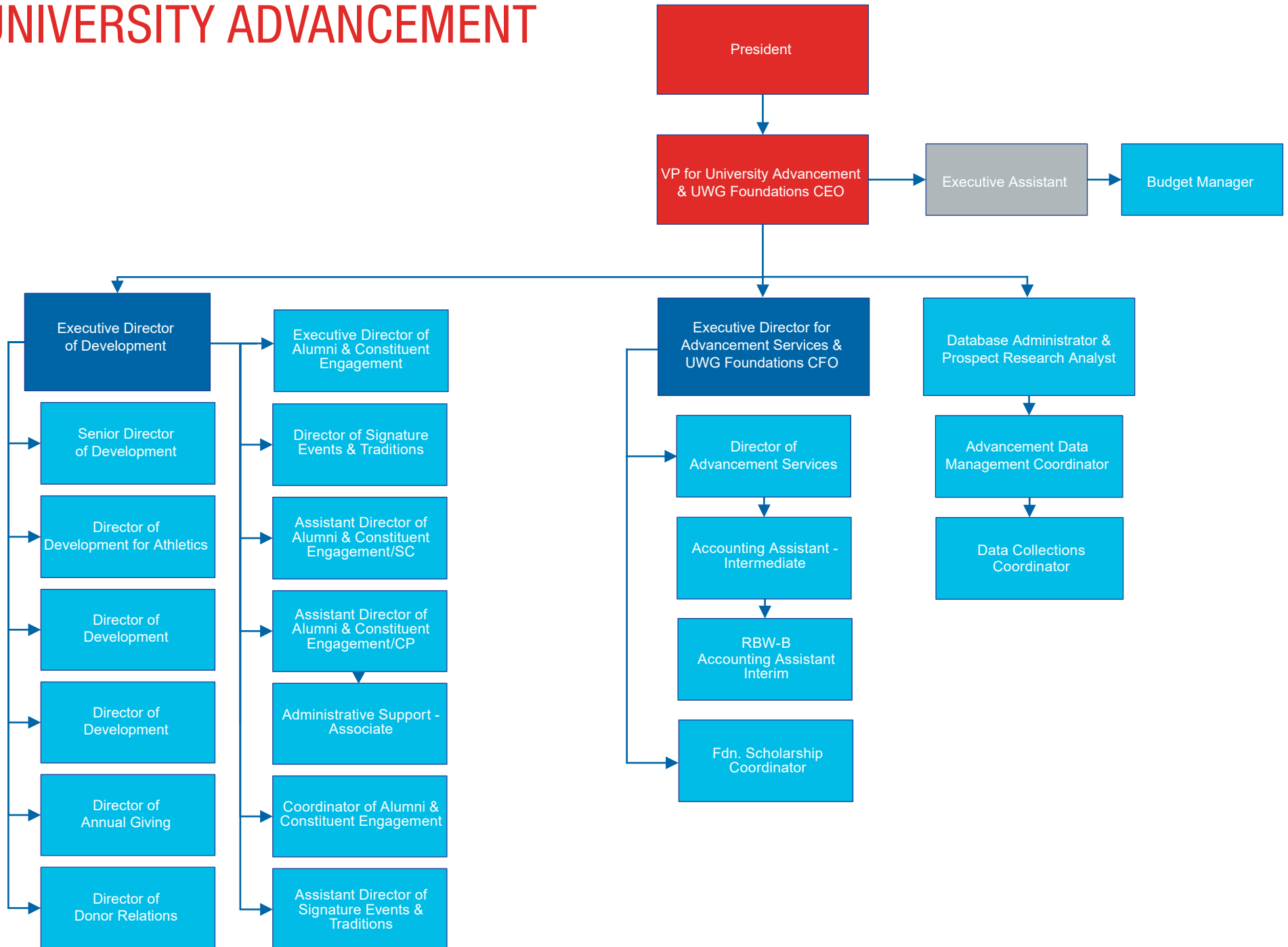
BUSINESS AND FINANCIAL SERVICES - AUXILIARY SERVICES



STUDENT AFFAIRS



UNIVERSITY ADVANCEMENT





ADMISSIONS

ADMISSIONS

APPLY, ACCEPT, AND ENROLL DATA BY FALL SEMESTER

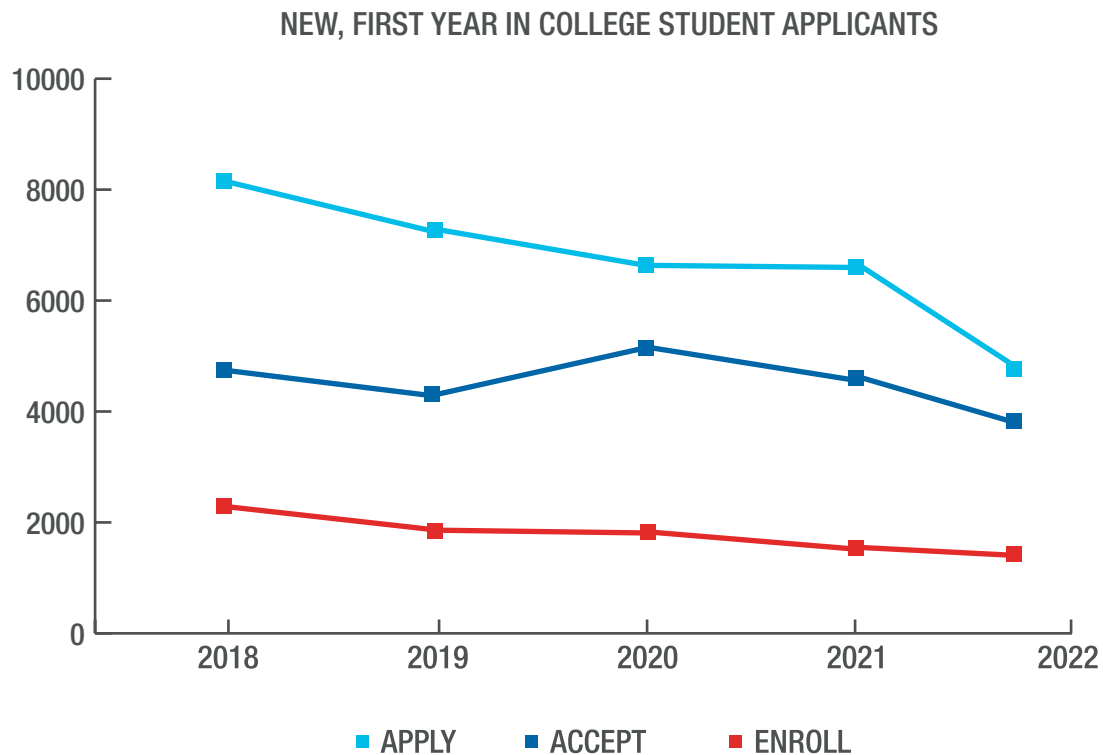
	2018	2019	2020	2021	2022
ALL STUDENTS ENROLLED					
Enrolled	13,733	13,238	13,419	12,718	11,914
New Enrolled	4,106	3,623	3,724	4,534	3,097
New Enrolled %	30%	27%	28%	36%	26%
ALL UNDERGRADUATE APPLICANTS					
Apply	9,824	8,778	7,988	7,832	5,592
Accepted	5,914	5,315	6,075	5,415	4,620
Enrolled	2,978	2,433	2,325	2,099	2,018
Accepted %	60%	61%	76%	69%	83%
Accepted and Enrolled (Yield)	50%	46%	38%	27%	44%
UNDERGRADUATE STUDENTS ENROLLED					
Enrolled	11,135	10,411	10,331	9,569	8,687
New Enrolled	3,369	2,867	2,342	2,775	2,271
New Enrolled %	30%	22%	23%	29%	26%
FIRST-TIME FIRST YEAR STUDENT: APPLY, ACCEPT, AND ENROLL					
Apply	8,154	7,272	6,634	6,610	4,772
Accepted	4,745	4,312	5,149	4,607	3,832
Enrolled	2,289	1,852	1,821	1,545	1,424
Accepted %	58%	59%	78%	70%	80%
Accepted and Enrolled (Yield)	48%	43%	35%	34%	37%

APPLY, ACCEPT, AND ENROLL DATA BY FALL SEMESTER

	2018	2019	2020	2021	2022
NEW TRANSFER STUDENT: APPLY, ACCEPT, AND ENROLL					
Apply	1,670	1,506	1,354	1,222	772
Accepted	1,169	1,003	926	808	743
Enrolled	689	581	504	538	506
Accepted %	70%	67%	68%	66%	96%
Accepted and Enrolled (Yield)	59%	58%	54%	67%	68%
FIRST-TIME FIRST YEAR STUDENT: MEAN SCORES					
SAT Critical Reading	503	500	530	549	533
SAT Math	481	474	466	488	502
SAT Writing	466	465	-	-	-
ACT Composite	20	20	20	21	20
High School GPA	3.16	3.22	3.22	3.31	3.43

ADMISSION TRENDS

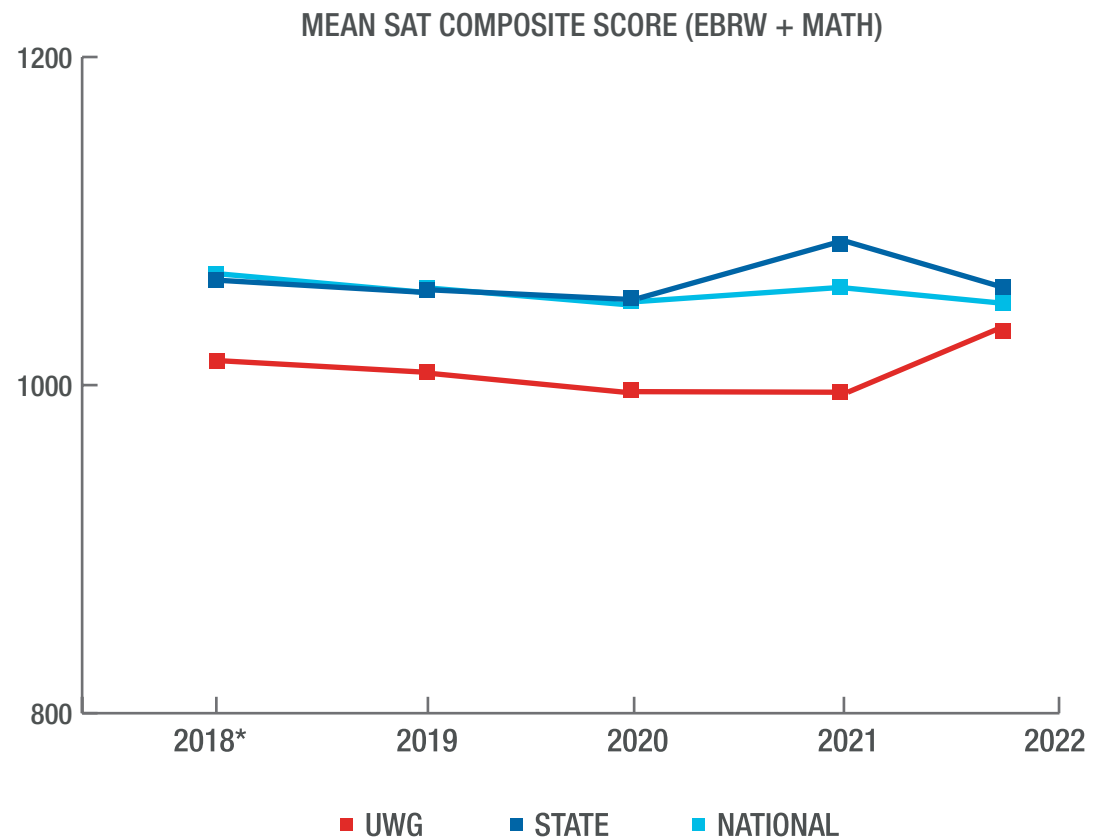
NEW, FIRST YEAR IN COLLEGE STUDENT APPLICANTS - FALL TERMS					
	2018	2019	2020	2021	2022
Apply	8,154	7,272	6,634	6,610	4,772
Accept	4,745	4,312	5,149	4,607	3,832
Accept Rate %	58%	59%	78%	70%	80%
Enroll	2,289	1,852	1,821	1,545	1,424
Accept and Enroll (Yield)	48%	43%	35%	34%	37%



Source: Office of Undergraduate Admissions,
Office of Institutional Effectiveness and Assessment

MEAN SCHOLASTIC APTITUDE TEST (SAT) SCORES

FIRST-TIME IN COLLEGE, FULL-TIME ENROLLED STUDENTS - FALL TERMS									
EVIDENCE BASED READING AND WRITING			MATHEMATICS			TOTAL SCORE			
TERM	UWG MEAN	STATE MEAN	NATIONAL MEAN	UWG MEAN	STATE MEAN	NATIONAL MEAN	UWG MEAN	STATE MEAN	NATIONAL MEAN
2018*	535	542	536	480	522	531	1015	1064	1068
2019	533	538	531	474	519	528	1007	1058	1059
2020	530	537	520	466	516	523	996	1053	1051
2021	549	551	533	488	534	528	994	1086	1060
2022	533	541	529	502	520	538	1035	1060	1050



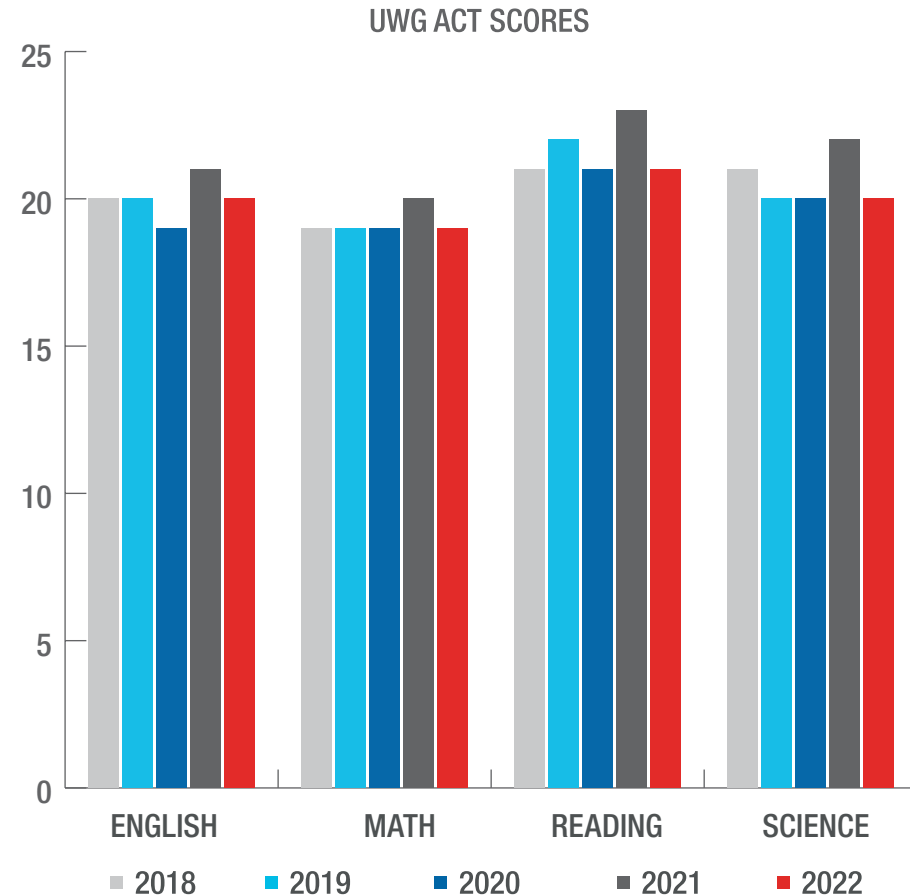
*2017 was the first administration of the redesigned SAT.

Note: Entrance Exams waived summer, fall, spring 2020 and 2021 due to COVID-19 pandemic. Entrance exams are currently optional with a minimum high school GPA of 3.2.

Source: Office of Undergraduate Admissions, Office of Institutional Effectiveness and Assessment

MEAN AMERICAN COLLEGE TESTING (ACT) SCORES

FIRST-TIME IN COLLEGE, FULL-TIME ENROLLED STUDENTS - FALL TERMS							
UNIVERSITY OF WEST GEORGIA				ACT COMPOSITE SCORE			
TERM	ACT ENGLISH	ACT MATH	ACT READING	ACT SCIENCE	UWG	STATE	NATIONAL
2018	20	19	21	21	20	21	21
2019	20	19	22	20	20	21	21
2020	19	19	21	20	20	21	21
2021	21	20	23	22	21	23	20
2022	20	19	21	20	20	22	20



Note: Entrance Exams waived summer, fall, spring 2020 and 2021 due to COVID-19 pandemic. Entrance exams are currently optional with a minimum high school GPA of 3.2.

Source: Office of Undergraduate Admissions,

MEAN HIGH SCHOOL GRADE POINT AVERAGE (GPA)

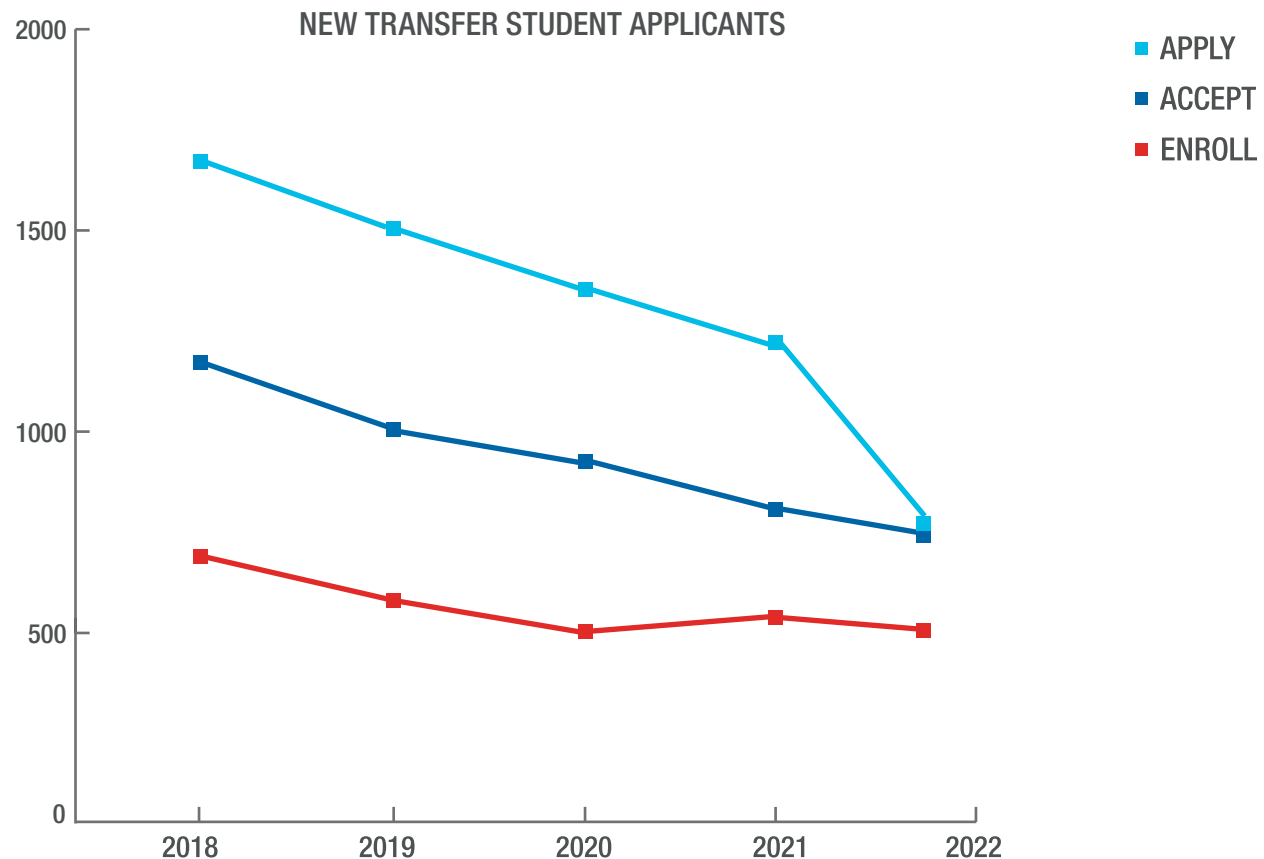
FIRST-TIME IN COLLEGE, FULL-TIME ENROLLED STUDENTS - FALL TERMS					
	2018	2019	2020	2021	2022
GPA	3.16	3.22	3.22	3.31	3.43

TOP 25 GEORGIA FEEDER HIGH SCHOOLS

FIRST-TIME IN COLLEGE, FULL-TIME ENROLLED STUDENTS - FALL TERM 2022			
SCHOOL	STUDENTS	SCHOOL	STUDENTS
Carrollton High School	71	Douglas County High School	17
East Coweta High School	70	Troup County Comprehensive HS	17
Robert S Alexander Comp HS	57	Bowdon High School	16
Central High School-Carrollton	51	New Manchester High School	16
Newnan High School	41	Harrison High School	15
Bremen High School	38	Did Not Attend HS (includes Home School)	15
Northgate High School	38	Model High School	13
Villa Rica High School	37	Whitewater High School	13
Haralson County High School	34	Temple High School	13
South Paulding High School	32	Cedartown High School	12
Paulding County High School	24	Lagrange High School	11
Chapel Hill High School	24	Harris County High School	11
Heard County Comprehensive HS	20	TOTAL	706

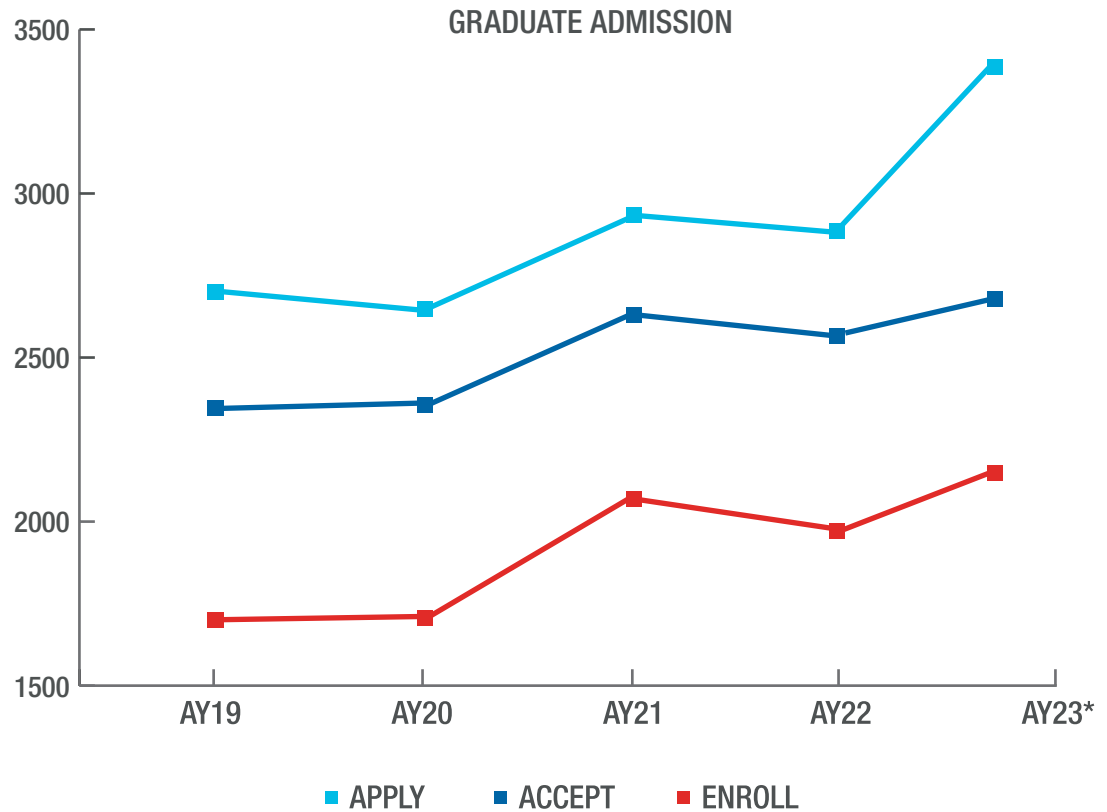
NEW TRANSFER STUDENT APPLICATIONS

NEW TRANSFER STUDENT APPLICANTS - FALL TERMS					
	2018	2019	2020	2021	2022
Apply	1,670	1,506	1,354	1,222	772
Accept	1,169	1,003	926	808	743
Accept Rate %	70%	67%	68%	66%	96%
Enroll	689	581	504	538	506
Accept and Enroll (Yield)	59%	58%	54%	67%	68%



GRADUATE ADMISSIONS

ACADEMIC YEARS 2018 - 2022					
	AY19	AY20	AY21	AY22	AY23*
Apply	2,701	2,649	2,933	2,885	3,387
Accept	2,345	2,355	2,630	2,566	2,677
Accept Rate %	87%	89%	90%	89%	79%
Enroll	1,701	1,707	2,068	1,972	2,149
Accept and Enroll (Yield)	73%	72%	79%	77%	80%



*Excludes international student applications and enrollment due to increased variance and institutional initiatives.

Note: Academic Year is reported as summer, fall, spring.

Source: UWG Graduate School, Office of Institutional Effectiveness and Assessment



ENROLLMENT

ENROLLMENT

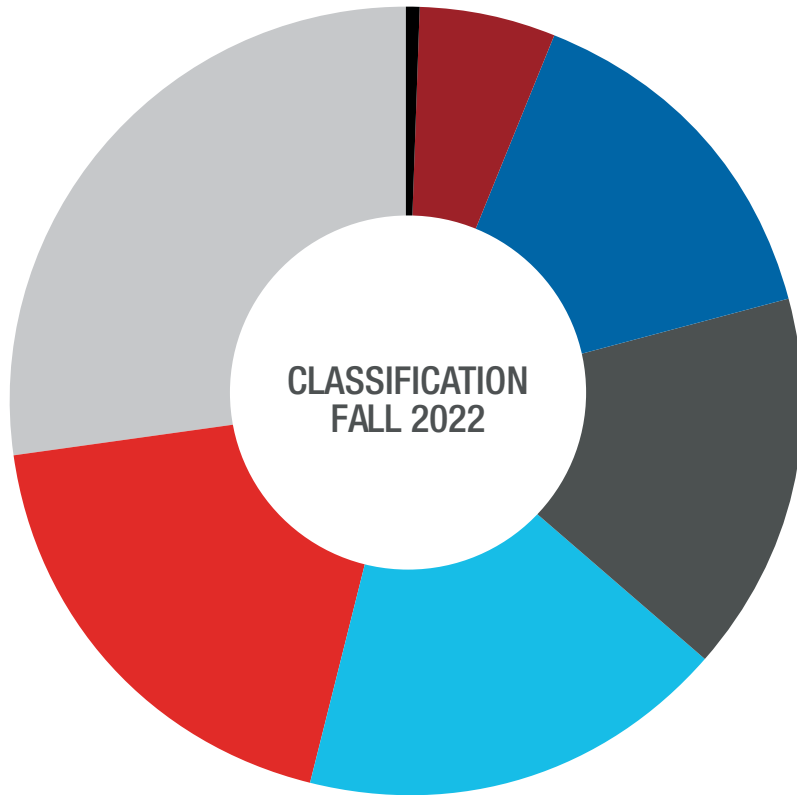
TOTAL ENROLLMENT BY CLASSIFICATION - FALL TERMS

	2018	2019	2020	2021	2022
CLASSIFICATION					
Freshman	3,348	2,833	2,622	2,396	2,251
Sophomore	2,600	2,483	2,299	1,939	1,767
Junior	2,261	2,169	2,185	1,998	1,835
Senior	2,195	2,220	2,296	2,218	2,087
Graduate	2,598	2,827	3,088	3,149	3,227
Dual Enrollment ¹	608	589	835	920	655
Other ²	123	117	94	98	92
TOTAL ENROLLMENT	13,733	13,238	13,419	12,718	11,914

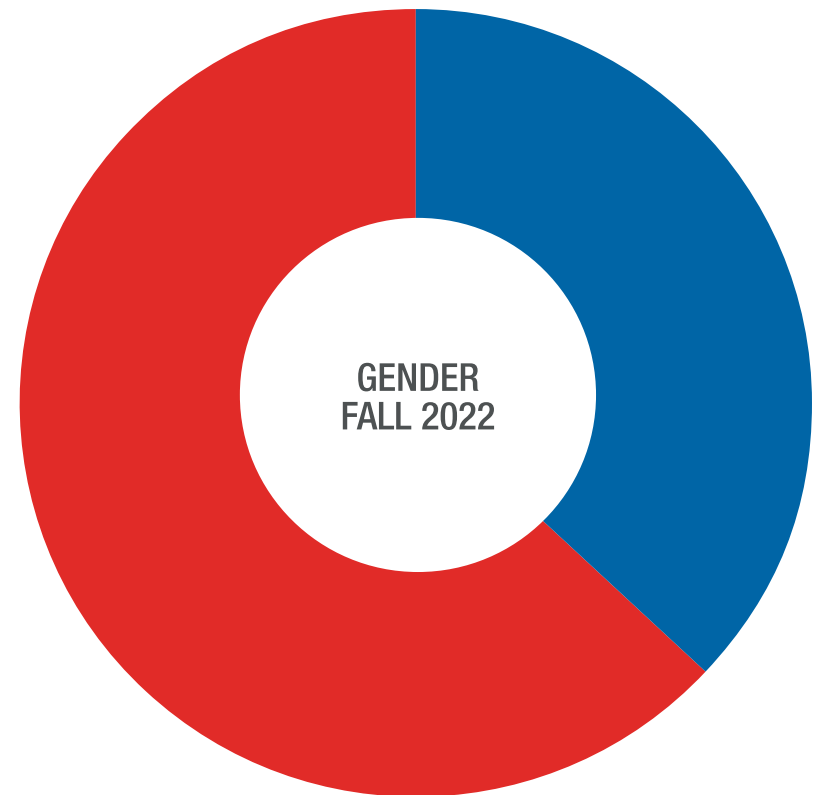
¹ Dual Enrollment is a non-need based grant program for students at eligible high schools enrolling at UWG to take approved college-level coursework for credit towards both high school and college graduation requirements.

² Includes Transients—visiting students who complete coursework at UWG for one semester, then return to their previously enrolled institution.

Source: Office of the Registrar, Office of Institutional Effectiveness and Assessment



■ DUAL ENROLLMENT	5.5%
■ FRESHMAN	18.9%
■ SOPHOMORE	14.8%
■ JUNIOR	15.4%
■ SENIOR	17.5%
■ GRADUATE	27.1%
■ OTHER	0.2%



■ FEMALE	67.8%
■ MALE	32.2%

ENROLLMENT

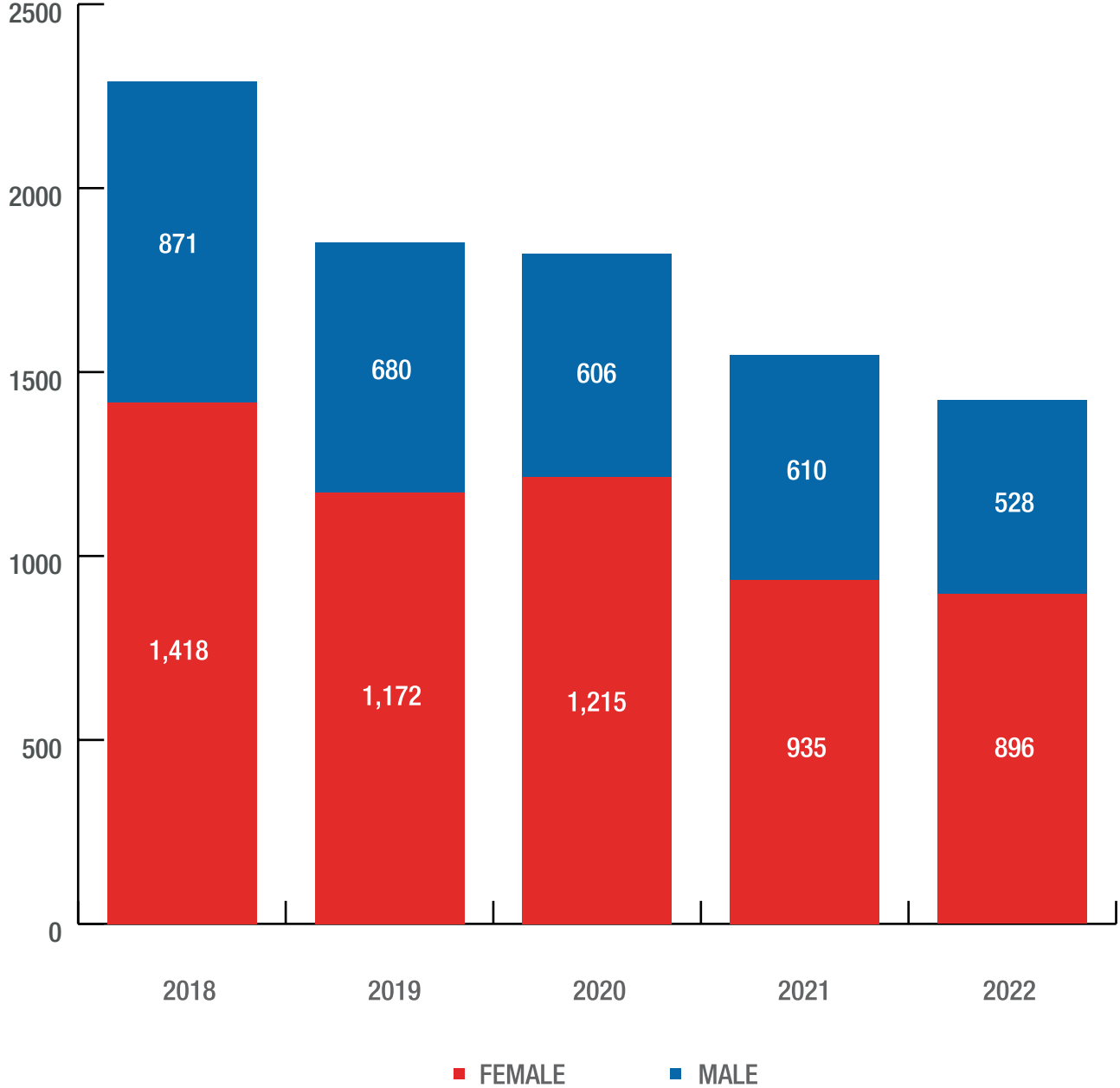
FIRST-TIME FIRST-YEAR STUDENT ENROLLMENT - FALL TERMS					
	2018	2019	2020	2021	2022
GENDER					
Female	1,418	1,172	1,215	935	896
Male	871	680	606	610	528
RACE/ETHNICITY					
U.S. Non-Resident	20	12	13	9	9
African American/Black	884	702	672	483	358
American Indian or Alaskan Native	2	3	1	3	2
Asian	28	10	12	20	25
Caucasian/White	986	838	867	782	798
Hispanic or Latino/a	254	172	145	156	143
Native Hawaiian or Other Pacific Islander	3	1	1	1	2
Two or more races	89	90	86	72	74
Unknown/Not Reported	23	24	24	19	13
FIRST-TIME, FIRST-YEAR IPEDS COHORT	2,289	1,852	1,821	1,545	1,424

Note: Data includes both full-time and part-time students

Note: Categories according to Integrated Postsecondary Education Data (IPEDS) by NCES (National Center for Education Statistics) methodology.

Source: Office of Institutional Effectiveness and Assessment

FIRST-TIME FIRST-YEAR IPEDS COHORT ENROLLMENT BY GENDER



ENROLLMENT

SELECTED STUDENT CHARACTERISTICS (ALL STUDENTS) - FALL TERMS					
	2018	2019	2020	2021	2022
GENDER					
Female	9,115	8,888	9,154	8,640	8,078
Male	4,618	4,350	4,265	4,078	3,836
RACE/ETHNICITY					
African American/Black	4,862	4,591	4,647	4,092	3,622
American Indian or Alaskan Native	24	24	17	22	19
Asian	202	189	181	183	142
Caucasian/White	6,981	6,768	6,828	6,672	6,377
Hispanic or Latino/a	939	928	979	975	891
Native Hawaiian or Other Pacific Islander	20	11	9	10	10
Two or more races	450	462	497	485	477
Unknown/Not Reported	255	265	261	279	221

Source: Office of the Registrar, Office of Institutional Effectiveness and Assessment

SELECTED STUDENT CHARACTERISTICS (ALL STUDENTS) - FALL TERMS

	2018	2019	2020	2021	2022
AVERAGE AGE					
Undergraduate	21.4	21.6	21.7	22.32	22.06
Graduate	34.9	35.0	35.0	36.18	35.97
ATTENDANCE STATUS					
Full-Time Undergraduate	8,728	8,090	7,528	6,781	6,281
Full-Time Graduate	611	552	652	575	612
TOTAL FULL-TIME	9,339	8,642	8,180	7,356	6,893
Part-Time Undergraduate	2,407	2,321	2,803	2,788	2,406
Part-Time Graduate	1,987	2,275	2,436	2,574	2,615
TOTAL PART-TIME	4,394	4,596	5,239	5,362	5,021
STUDENTS RECEIVING VETERANS BENEFITS	298	364	368	350	326
STUDENTS WITH SENIOR CITIZEN WAIVER	37	56	52	52	64



ENROLLMENT

FALL 2022 TOTAL STUDENT ENROLLMENT CHARACTERISTICS - UNDERGRADUATE (UG)

RACE/ETHNICITY	FEMALE	RACE/ETH % FEMALE UG	MALE	RACE/ETH % MALE UG	TOTAL UG	RACE/ETH % ALL UG
U.S. Non-Resident	48	0.9%	40	1.3%	88	1.0%
African American/Black	1,776	31.7%	954	30.9%	2,730	31.4%
American Indian or Alaskan Native	8	0.1%	6	0.2%	14	0.2%
Asian	77	1.4%	36	1.2%	113	1.3%
Caucasian/White	2,824	50.4%	1,606	52.1%	4,430	51.0%
Hispanic or Latino/a	530	9.5%	236	7.6%	766	8.8%
Native Hawaiian or Other Pacific Islander	5	0.1%	3	0.1%	8	0.1%
Two or more races	256	4.6%	141	4.6%	397	4.6%
Unknown/Not Reported	78	1.4%	63	2.0%	141	1.6%
TOTAL	5,602		3,085		8,687	

GENDER PERCENTAGE BY LEVEL	TOTAL FEMALE	PERCENT FEMALE	TOTAL MALE	PERCENT MALE	TOTAL
Undergraduate	5,602	64.5%	3,085	35.5%	8,687
Graduate	2,476	76.7%	751	23.3%	3,227

Source: Office of Institutional Effectiveness and Assessment

FALL 2022 TOTAL STUDENT ENROLLMENT CHARACTERISTICS - GRADUATE (GR)

RACE/ETHNICITY	FEMALE	RACE/ETH % FEMALE GR	MALE	RACE/ETH % MALE GR	TOTAL UG	RACE/ETH % ALL GR
U.S. Non-Resident	31	1.3%	36	4.8%	67	2.1%
African American/Black	678	27.4%	214	28.5%	892	27.6%
American Indian or Alaskan Native	3	0.1%	2	0.3%	5	0.2%
Asian	21	0.8%	8	1.1%	29	0.9%
Caucasian/White	1,515	61.2%	432	57.5%	1,947	60.3%
Hispanic or Latino/a	100	4.0%	25	3.3%	125	3.9%
Native Hawaiian or Other Pacific Islander	2	0.1%	-	0.0%	2	0.1%
Two or more races	62	2.5%	18	2.4%	80	2.5%
Unknown/Not Reported	64	2.6%	16	2.1%	80	2.5%
TOTAL	2,476		751		3,227	

FALL 2022 TOTAL STUDENT ENROLLMENT CHARACTERISTICS - TOTAL UWG

RACE/ETHNICITY	ALL GENDERS	RACE/ETH % ALL UWG
U.S. Non-Resident	155	1.3%
African American/Black	3,622	30.4%
American Indian or Alaskan Native	19	0.2%
Asian	142	1.2%
Caucasian/White	6,377	53.5%
Hispanic or Latino/a	891	7.5%
Native Hawaiian or Other Pacific Islander	10	0.1%
Two or more races	477	4.0%
Unknown/Not Reported	221	1.9%
TOTAL	11,914	

ENROLLMENT

ENROLLED GEORGIA RESIDENTS BY COUNTY OF ORIGIN AND LEVEL - FALL TERM 2022

COUNTIES	UNDERGRADUATE	GRADUATE	TOTAL
Appling	-	2	2
Atkinson	-	1	1
Bacon	-	1	1
Baker	-	2	2
Baldwin	9	2	11
Banks	2	5	7
Barrow	15	20	35
Bartow	50	31	81
Ben Hill	2	3	5
Bibb	36	19	55
Bleckley	1	1	2
Brantley	2	2	4
Brooks	-	1	1
Bryan	6	9	15
Bulloch	9	12	21
Burke	8	-	8
Butts	19	5	24
Calhoun	-	4	4
Camden	2	7	9
Candler	1	1	2
Carroll	1,445	222	1,667
Catoosa	30	29	59
Charlton	1	1	2
Chatham	6	29	35
Chattahoochee	1	-	1

COUNTIES	UNDERGRADUATE	GRADUATE	TOTAL
Chattooga	27	8	35
Cherokee	100	93	193
Clarke	17	28	45
Clay	1	1	2
Clayton	196	68	264
Clinch	1	3	4
Cobb	418	267	685
Coffee	1	14	15
Colquitt	7	2	9
Columbia	15	19	34
Cook	1	5	6
Coweta	1,231	182	1,413
Crawford	3	2	5
Crisp	4	1	5
Dade	-	1	1
Dawson	3	8	11
Decatur	1	2	3
Dekalb	228	148	376
Dodge	2	5	7
Dooly	2	1	3
Dougherty	14	7	21
Douglas	833	118	951
Early	2	-	2
Echols	-	1	1
Effingham	4	7	11

COUNTIES	UNDERGRADUATE	GRADUATE	TOTAL
Elbert	4	3	7
Emanuel	2	5	7
Evans	-	1	1
Fannin	4	2	6
Fayette	246	63	309
Floyd	102	45	147
Forsyth	60	36	96
Franklin	2	5	7
Fulton	409	196	605
Gilmer	2	6	8
Glascock	1	-	1
Glynn	10	12	22
Gordon	35	22	57
Grady	3	3	6
Greene	5	2	7
Gwinnett	364	212	576
Habersham	6	12	18
Hall	46	36	82
Hancock	-	3	3
Haralson	284	46	330
Harris	39	11	50
Hart	4	7	11
Heard	88	13	101
Henry	226	80	306
Houston	40	46	86
Irwin	-	1	1
Jackson	18	25	43

COUNTIES	UNDERGRADUATE	GRADUATE	TOTAL
Jasper	6	1	7
Jeff Davis	-	3	3
Jefferson	1	5	6
Johnson	1	-	1
Jones	4	5	9
Lamar	5	8	13
Lanier	1	3	4
Laurens	4	14	18
Lee	12	11	23
Liberty	-	6	6
Lincoln	1	-	1
Long	1	3	4
Lowndes	23	23	46
Lumpkin	5	5	10
McDuffie	1	4	5
McIntosh	1	1	2
Macon	3	2	5
Madison	3	8	11
Marion	2	4	6
Meriwether	36	7	43
Miller	1	2	3
Mitchell	2	2	4
Monroe	6	7	13
Montgomery	1	5	6
Morgan	6	4	10
Murray	19	12	31
Muscogee	57	36	93

COUNTIES	UNDERGRADUATE	GRADUATE	TOTAL
Newton	77	29	106
Oconee	9	11	20
Oglethorpe	7	3	10
Paulding	466	117	583
Peach	2	5	7
Pickens	10	8	18
Pierce	1	4	5
Pike	32	6	38
Polk	78	30	108
Pulaski	1	1	2
Putnam	2	1	3
Rabun	3	2	5
Randolph	2	5	7
Richmond	28	18	46
Rockdale	80	37	117
Schley	4	-	4
Screven	1	5	6
Seminole	4	5	9
Spalding	48	18	66
Stephens	5	12	17
Stewart	2	-	2
Sumter	7	10	17
Talbot	1	5	6
Tattnall	-	3	3
Taylor	4	3	7
Telfair	1	2	3

COUNTIES	UNDERGRADUATE	GRADUATE	TOTAL
Terrell	1	2	3
Thomas	13	13	26
Tift	11	8	19
Toombs	2	5	7
Towns	-	1	1
Treutlen	-	1	1
Troup	191	45	236
Twiggs	5	1	6
Union	1	4	5
Upson	8	16	24
Walker	21	15	36
Walton	42	31	73
Ware	3	11	14
Warren	4	1	5
Washington	4	4	8
Wayne	1	5	6
Webster	1	-	1
Wheeler	-	1	1
White	3	5	8
Whitfield	27	20	47
Wilcox	-	1	1
Wilkes	2	-	2
Wilkinson	5	2	7
Worth	4	-	4
Out of State	432	152	584
Out of Country	73	69	142
TOTAL	8,687	3,227	11,914

Source: Office of Institutional Effectiveness and Assessment



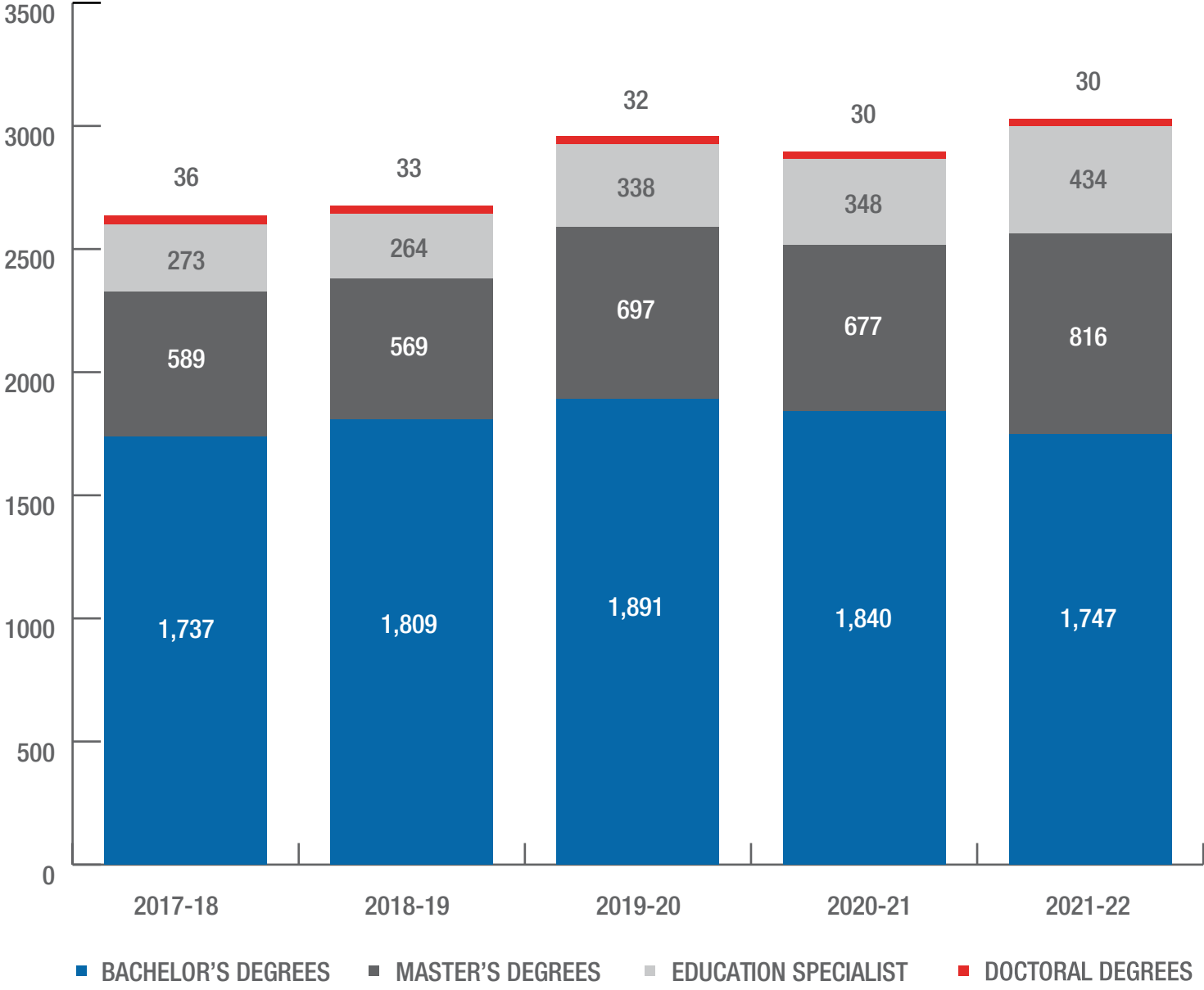


GRADUATION

GRADUATION

TOTAL GRADUATES BY DEGREE LEVEL - ACADEMIC YEARS (JULY 1-JUNE 30) 2018-2022					
	2017-18	2018-19	2019-20	2020-21	2021-22
TOTAL DEGREES AND CERTIFICATES AWARDED BY LEVEL					
Certificate/Diploma	-	-	-	-	2
Bachelor Degrees	1,737	1,809	1,891	1,840	1,747
Post-Baccalaureate Certificates	22	23	20	20	18
Master Degrees	589	569	697	677	816
Post-Master's Certificates	2	1	-	-	1
Education Specialist	273	264	338	348	434
Doctorate Degrees	36	33	32	30	30
TOTAL	2,659	2,697	2,978	2,915	3,048

DEGREES CONFERRED



Note: Certificate/diploma, Post-Bachelor's, and Post-Master's Certificates were not included in the bar graph.
 Source: Office of Institutional Effectiveness and Assessment

RETENTION AND GRADUATION RATES

FIRST-TIME FULL-TIME UNDERGRADUATE COHORT							
		2016	2017	2018	2019	2020	2021
FIRST YEAR	N=	2,375	2,176	2,182	1,777	1,683	1,439
SECOND YEAR	FALL	1,719	1,498	1,507	1,294	1,156	1,055
		72.38%	68.84%	69.07%	72.82%	68.69%	73.31%
THIRD YEAR	FALL	1,359	1,204	1,231	1,024	952	
		57.22%	55.33%	56.42%	57.63%	56.57%	
FOURTH YEAR	FALL	1,184	1,093	1,090	857		
		49.85%	50.23%	49.95%	48.23%		
FIFTH YEAR	FALL	541	514	537			
		22.78%	23.62%	24.61%			
SIXTH YEAR	FALL	178	167				
		7.49%	7.67%				

FIRST-TIME FULL-TIME UNDERGRADUATE COHORT						
		2014	2015	2016	2017	2018
GRADUATION RATE	N=	479	508	604	544	540
	FOUR YEAR	22.10%	21.68%	25.43%	25.00%	24.75%
	N=	857	886	929	851	
	FIVE YEAR	39.55%	37.81%	39.12%	39.11%	
	N=	961	993	1,029		
	SIX YEAR	44.35%	42.38%	43.33%		



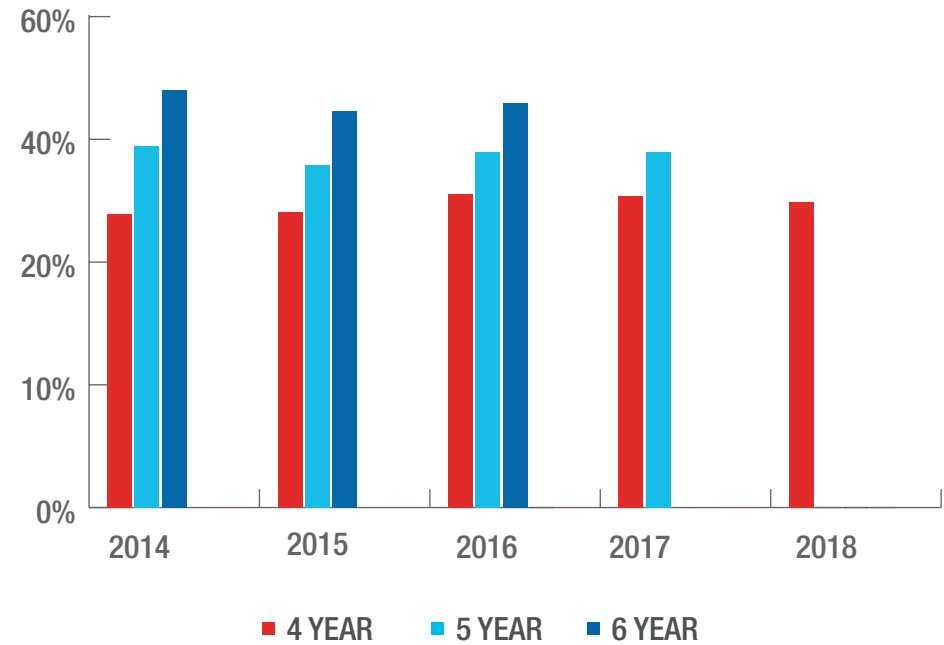
Note: Each entering class includes all entering first-time in college undergraduate students enrolled full-time whose first term is the fall indicated or the previous summer per IPEDS methodology.

Source: Office of Institutional Effectiveness and Assessment

RETENTION RATES PER COHORT



GRADUATION RATES





FACULTY

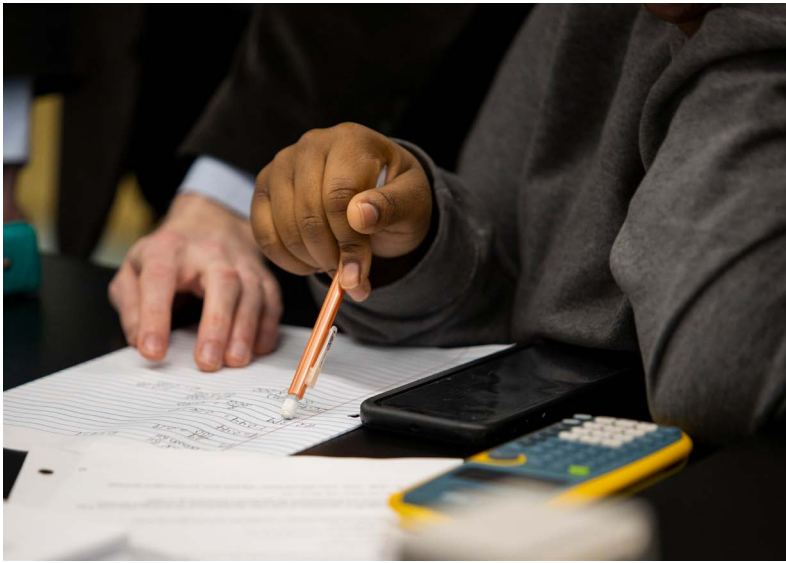
FACULTY PROFILE OVERVIEW

FACULTY TOTALS FALL 2022

	TEACHING FACULTY		ADMINISTRATORS		LIBRARIANS	TOTAL ⁴	PERCENT
	FULL-TIME ³	PART-TIME	GENERAL ¹	ACADEMIC ²			
RANK⁵							
Professor	128	-	8	29	7	172	25%
Associate Professor	87	-	-	17	3	107	15%
Assistant Professor	94	-	-	4	-	98	14%
Instructor	22	213	-	3	-	238	34%
Lecturer	81	-	-	6	-	87	12%
COLLEGE/DEPARTMENT							
College of Arts, Culture, and Scientific Inquiry	179	69	5	15	-	268	38%
College of Education	91	93	2	17	-	203	29%
Richards College of Business	49	5	-	8	-	62	9%
School of Communication, Film, and Media	11	6	1	5	-	23	3%
School of Nursing	26	22	-	8	-	56	8%
University College	56	18	-	5	-	79	11%
Ingram Library	-	-	-	1	10	11	2%
HIGHEST DEGREE EARNED							
Doctorate	305	81	8	48	1	443	63%
Master's or Ed.S.	107	111	-	11	9	238	34%
Professional Bachelor's	-	21	-	-	-	21	3%
TENURE STATUS							
Tenured	211	-	8	43	10	272	39%
Not on Tenure Track	131	213	-	11	-	355	51%
Tenure Track	70	-	-	5	-	75	11%

¹ General Administrators include the Provost and VPAA, Associate Vice Presidents, Director of Education Abroad, Chief Administrative Officer of Douglasville, Vice President for Innovation and Research, the Provost Fellow for Student Success, and Director of Ombuds Services.

² Academic Administrators include Deans, Associate and Assistant Deans, Department Chairs, Associate and Assistant Department Chairs, and Academic Directors.



	TEACHING FACULTY		ADMINISTRATORS		LIBRARIANS	TOTAL ⁴	PERCENT
	FULL-TIME ³	PART-TIME	GENERAL ¹	ACADEMIC ²			
RACE/ETHNICITY							
African American/Black	36	35	2	5	1	79	11%
American Indian or Alaskan Native	-	-	-	-	-	-	0%
Asian	46	4	-	3	-	53	8%
Caucasian/White	311	151	6	51	9	528	75%
Hispanic or Latino/a	15	2	-	-	-	17	2%
Native Hawaiian or Other Pacific Islander	-	-	-	-	-	-	0%
Two or More Races	3	6	-	-	-	9	1%
Unknown/Not Reported	1	15	-	-	-	16	2%
GENDER							
Female	238	148	5	29	8	428	60%
Male	174	65	3	30	2	274	40%
TOTAL FACULTY	412	213	8	59	10	702	100%

³ Limited Term Faculty are included as Full-Time Faculty

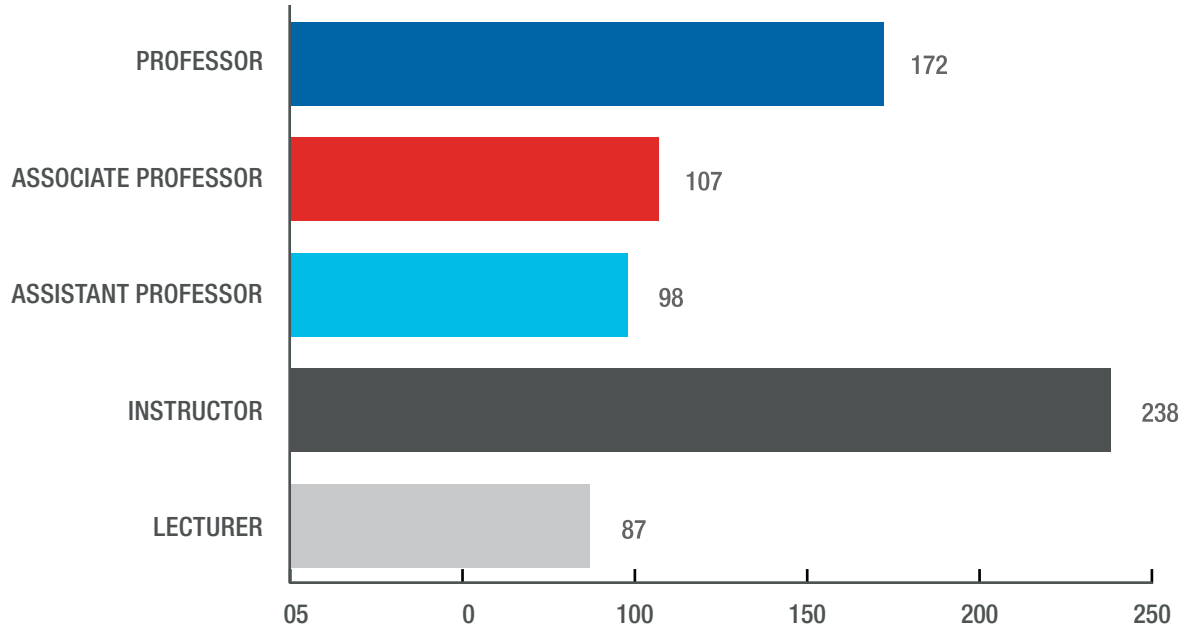
⁴ 12-month staff who teach courses are included in the staff portion of the Fact Book and are excluded from the faculty portion

⁵ Graduate Teaching Assistants are excluded

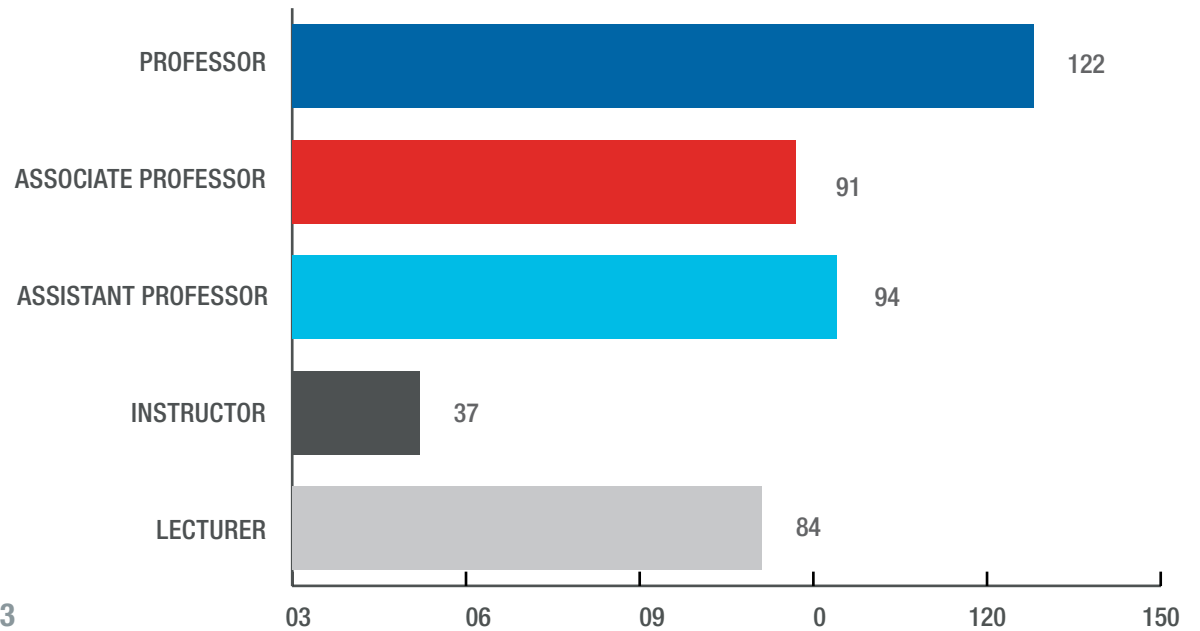
Source: Office of the Provost and Vice President for Academic Affairs

FACULTY PROFILE

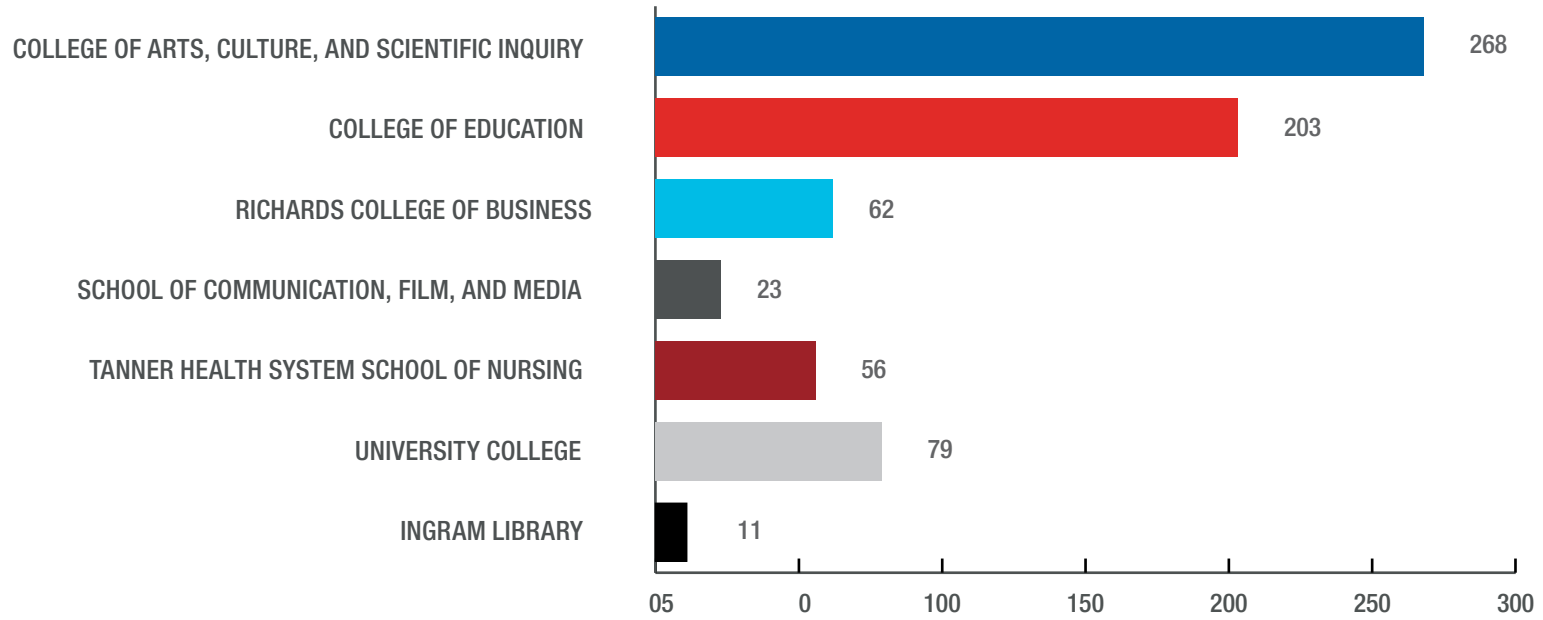
TOTAL FACULTY RANK FALL 2022



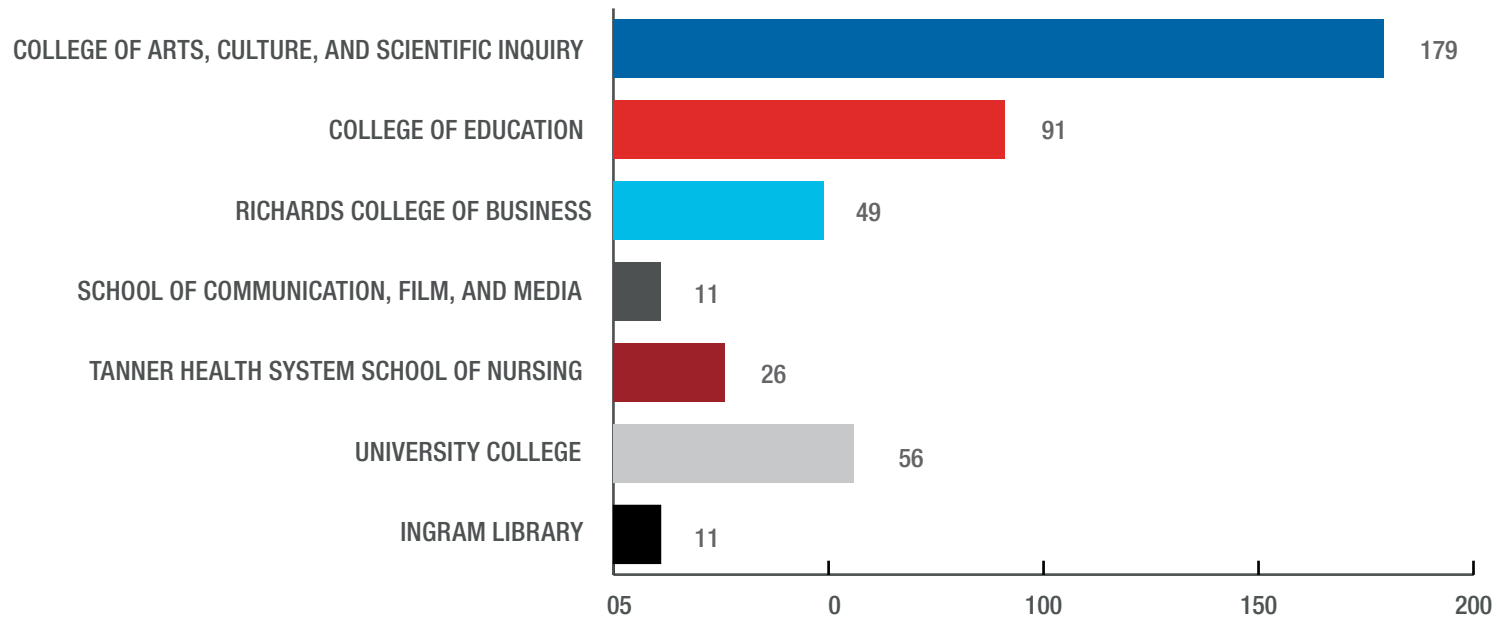
FULL-TIME FACULTY RANK FALL 2022



TOTAL FACULTY BY COLLEGE/SCHOOL/LIBRARY FALL 2022

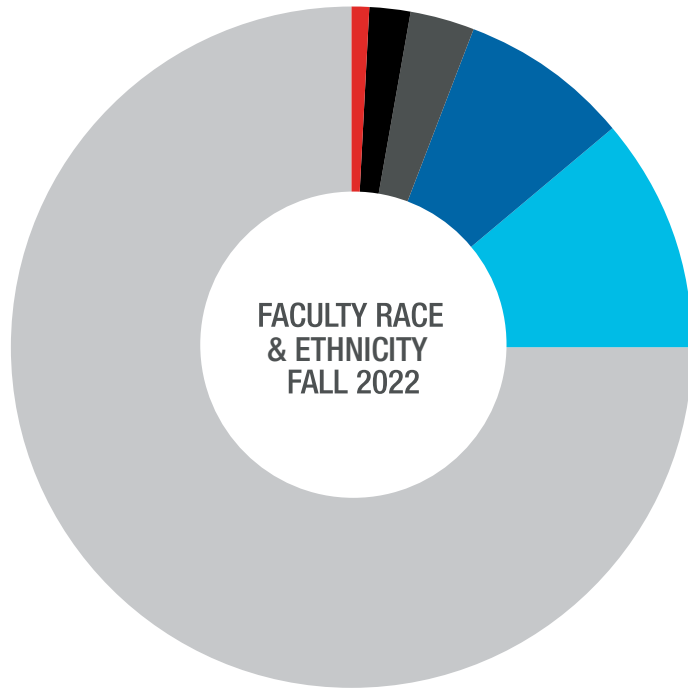


FULL-TIME FACULTY BY COLLEGE/SCHOOL/LIBRARY FALL 2022

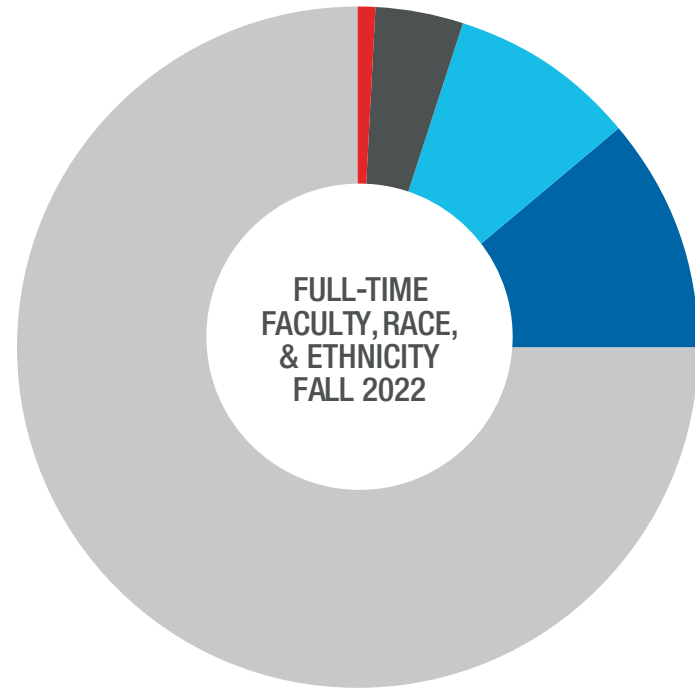


Source: Office of the Provost and Vice President for Academic Affairs

FACULTY PROFILE

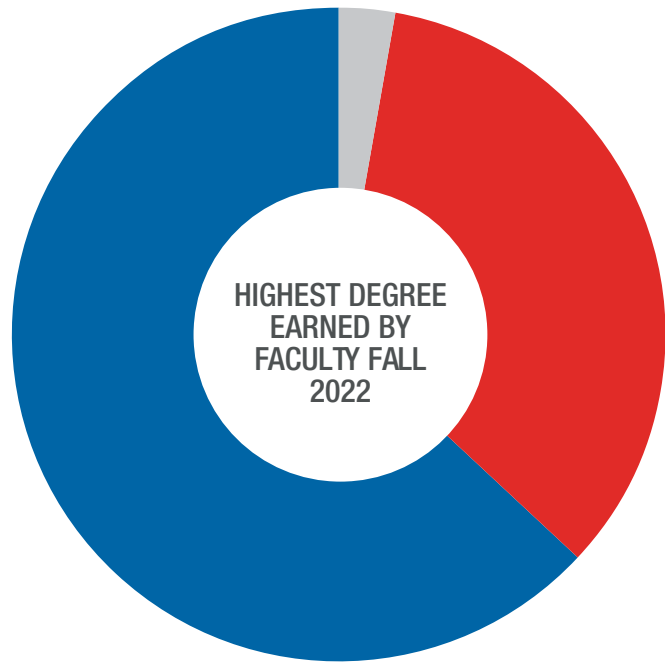


■ AFRICAN AMERICAN/BLACK	11%
■ ASIAN	8%
■ CAUCASIAN/WHITE	75%
■ HISPANIC OR LATINO/A	3%
■ TWO OR MORE RACES	1%
■ AMERICAN INDIAN OR ALASKAN NATIVE	0%
■ NATIVE HAWAIIAN OR OTHER PACIFIC ISLANDER	0%
■ UNKNOWN/NOT REPORTED	2%

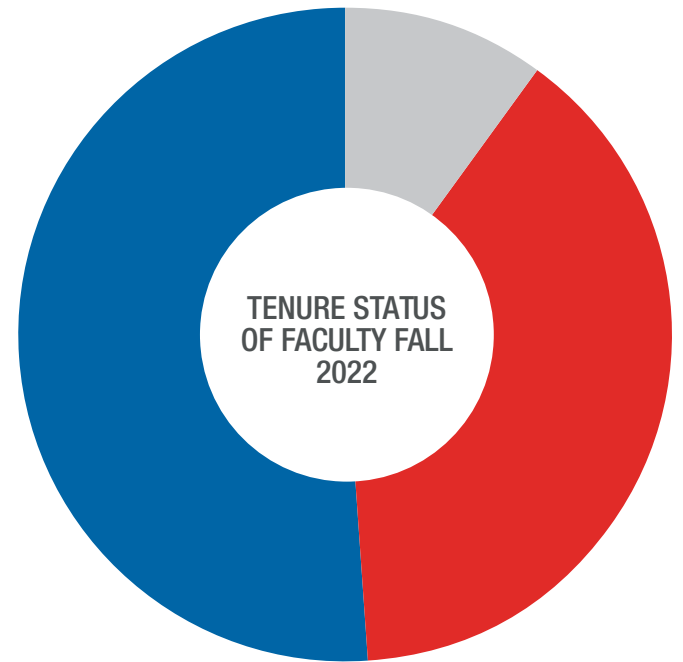


■ AFRICAN AMERICAN/BLACK	8%
■ ASIAN	11%
■ CAUCASIAN/WHITE	76%
■ HISPANIC OR LATINO/A	4%
■ TWO OR MORE RACES	1%

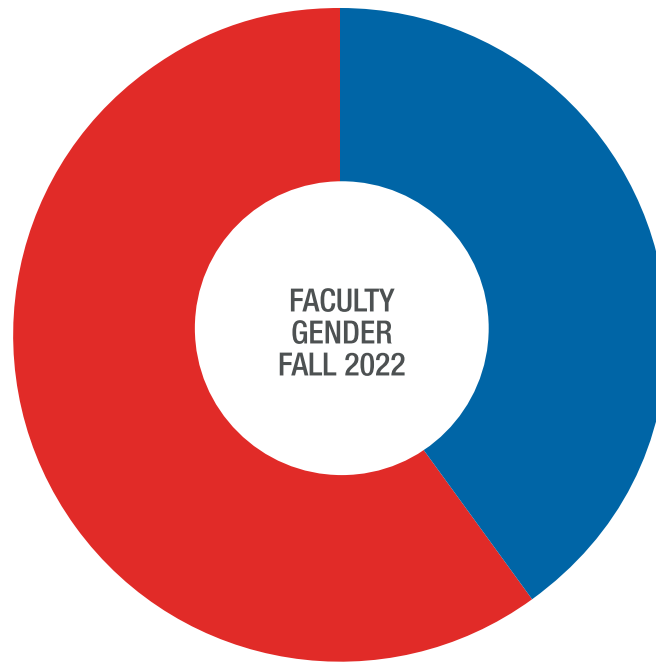
Source: Office of the Provost and Vice President for Academic Affairs



- DOCTORATE 63%
- MASTER'S OR EDS 34%
- PROFESSIONAL BACHELOR'S 3%



- TENURE 51%
- TENURE TRACK 10%
- NOT ON TENURE TRACK 39%



- FEMALE 60%
- MALE 40%

FACULTY PROFILE OVERVIEW

COLLEGE OF ARTS, CULTURE, AND SCIENTIFIC INQUIRY FALL 2022

	TEACHING FACULTY		ADMINISTRATORS		TOTAL	PERCENT
	FULL-TIME	PART-TIME	GENERAL ¹	ACADEMIC ²		
RANK						
Professor	83	-	5	11	99	37%
Associate Professor	47	-	-	2	49	18%
Assistant Professor	17	-	-	1	18	7%
Instructor	6	69	-	-	75	28%
Lecturer	26	-	-	1	27	10%
HIGHEST DEGREE EARNED						
Doctorate	148	23	5	11	187	70%
Master's or Ed.S.	31	44	-	4	79	29%
Professional Bachelor's	-	2	-	-	2	1%
TENURE STATUS						
Tenured	128	-	5	11	145	54%
Not on Tenure Track	32	69	-	4	102	38%
Tenure Track	19	-	-	-	21	8%
RACE/ETHNICITY						
African American/Black	5	11	-	-	16	6%
American Indian or Alaskan Native	-	-	-	-	-	0%
Asian	24	1	-	1	26	10%
Caucasian/White	143	44	5	14	206	77%
Hispanic or Latino/a	5	1	-	-	6	2%
Native Hawaiian or Other Pacific Islander	-	-	-	-	-	0%
Two or More Races	1	1	-	-	2	1%
Unknown/Not Reported	1	11	-	-	12	4%
GENDER						
Female	89	36	2	5	132	49%
Male	90	33	3	10	136	51%
TOTAL FACULTY	179	69	5	15	268	100%

COLLEGE OF EDUCATION FALL 2022

	TEACHING FACULTY		ADMINISTRATORS		TOTAL	PERCENT
	FULL-TIME	PART-TIME	GENERAL ¹	ACADEMIC ²		
Professor	11	-	2	7	20	10%
Associate Professor	17	-	-	6	23	11%
Assistant Professor	45	-	-	1	46	23%
Instructor	11	93	-	3	107	53%
Lecturer	7	-	-	-	7	3%
HIGHEST DEGREE EARNED						
Doctorate	76	51	2	14	143	70%
Master's or Ed.S.	15	36	-	3	54	27%
Professional Bachelor's	-	6	-	-	6	3%
TENURE STATUS						
Tenured	29	-	2	13	44	22%
Not on Tenure Track	29	93	-	4	126	62%
Tenure Track	33	-	-	-	33	16%
ETHNICITY						
African American/Black	17	14	1	2	34	17%
American Indian or Alaskan Native	-	-	-	-	-	0%
Asian	8	2	-	-	10	5%
Caucasian/White	61	73	1	15	150	74%
Hispanic or Latino/a	3	-	-	-	3	1%
Native Hawaiian or Other Pacific Islander	-	-	-	-	-	0%
Two or More Races	2	2	-	-	4	2%
Unknown/Not Reported	-	2	-	-	2	1%
GENDER						
Female	62	78	2	10	152	75%
Male	29	15	-	7	51	25%
TOTAL FACULTY	91	93	2	17	203	100%

¹ General Administrators include the Provost and VPAA, Associate Vice Presidents, Director of Education Abroad, Chief Administrative Officer of Douglasville, Vice President for Innovation and Research, the Provost Fellow for Student Success, and Director of Ombuds Services.

² Academic Administrators include Deans, Associate and Assistant Deans, Department Chairs, Associate and Assistant Department Chairs, and Academic Directors.

Source: Office of the Provost and Vice President for Academic Affairs

RICHARDS COLLEGE OF BUSINESS FALL 2022

	TEACHING FACULTY		ADMINISTRATORS		TOTAL	PERCENT
	FULL-TIME	PART-TIME	GENERAL ¹	ACADEMIC ²		
Professor	25	-	-	5	30	48%
Associate Professor	8	-	-	-	8	13%
Assistant Professor	2	-	-	-	2	3%
Instructor	1	5	-	-	6	10%
Lecturer	13	-	-	3	16	26%
HIGHEST DEGREE EARNED						
Doctorate	38	-	-	5	37	65%
Master's or Ed.S.	11	5	-	3	22	35%
Professional Bachelor's	-	-	-	-	3	5%
TENURE STATUS						
Tenured	32	-	-	5	37	60%
Not on Tenure Track	14	5	-	3	22	35%
Tenure Track	3	-	-	-	3	5%
RACE/ETHNICITY						
African American/Black	2	-	-	2	4	6%
American Indian or Alaskan Native	-	-	-	-	-	0%
Asian	10	-	-	2	12	19%
Caucasian/White	31	4	-	4	39	63%
Hispanic or Latino/a	6	-	-	-	6	10%
Native Hawaiian or Other Pacific Islander	-	-	-	-	-	0%
Two or More Races	-	-	-	-	-	0%
Unknown/Not Reported	-	1	-	-	1	2%
GENDER						
Female	23	3	-	3	29	47%
Male	26	2	-	5	33	53%
TOTAL FACULTY	49	5	-	8	62	100%

¹ General Administrators include the Provost and VPAA, Associate Vice Presidents, Director of Education Abroad, Chief Administrative Officer of Douglasville, Vice President for Innovation and Research, the Provost Fellow for Student Success, and Director of Ombuds Services.

² Academic Administrators include Deans, Associate and Assistant Deans, Department Chairs, Associate and Assistant Department Chairs, and Academic Directors.

Source: Office of the Provost and Vice President for Academic Affairs

SCHOOL OF COMMUNICATION, FILM, AND MEDIA FALL 2022

	TEACHING FACULTY		ADMINISTRATORS		TOTAL	PERCENT
	FULL-TIME	PART-TIME	GENERAL ¹	ACADEMIC ²		
Professor	1	-	1	2	4	17%
Associate Professor	3	-	-	1	4	17%
Assistant Professor	4	-	-	-	4	17%
Instructor	-	6	-	-	6	26%
Lecturer	3	-	-	2	5	22%
HIGHEST DEGREE EARNED						
Doctorate	6	1	1	4	12	52%
Master's or Ed.S.	5	5	-	1	11	48%
Professional Bachelor's	-	-	-	-	-	0%
TENURE STATUS						
Tenured	4	-	1	3	8	35%
Not on Tenure Track	5	6	-	2	13	57%
Tenure Track	2	-	-	-	2	9%
RACE/ETHNICITY						
African American/Black	4	3	1	-	8	35%
American Indian or Alaskan Native	-	-	-	-	-	0%
Asian	1	1	-	-	2	9%
Caucasian/White	6	2	-	5	13	56%
Hispanic or Latino/a	-	-	-	-	-	0%
Native Hawaiian or Other Pacific Islander	-	-	-	-	-	0%
Two or More Races	-	-	-	-	-	0%
Unknown/Not Reported	-	-	-	-	-	0%
GENDER						
Female	6	3	1	1	11	48%
Male	5	3	-	4	12	52%
TOTAL FACULTY	11	6	1	5	23	100%

¹ General Administrators include the Provost and VPAA, Associate Vice Presidents, Director of Education Abroad, Chief Administrative Officer of Douglasville, Vice President for Innovation and Research, the Provost Fellow for Student Success, and Director of Ombuds Services.

² Academic Administrators include Deans, Associate and Assistant Deans, Department Chairs, Associate and Assistant Department Chairs, and Academic Directors.

Source: Office of the Provost and Vice President for Academic Affairs

TANNER HEALTH SYSTEM SCHOOL OF NURSING FALL 2022

	TEACHING FACULTY		ADMINISTRATORS		TOTAL	PERCENT
	FULL-TIME	PART-TIME	GENERAL ¹	ACADEMIC ²		
Professor	1	-	-	2	3	5%
Associate Professor	2	-	-	4	6	11%
Assistant Professor	23	-	-	2	25	45%
Instructor	-	22	-	-	22	39%
Lecturer	-	-	-	-	-	0%
HIGHEST DEGREE EARNED						
Doctorate	12	1	-	7	20	36%
Master's or Ed.S.	14	8	-	1	23	41%
Professional Bachelor's	-	13	-	-	13	23%
TENURE STATUS						
Tenured	1	-	-	4	5	9%
Not on Tenure Track	15	22	-	1	38	68%
Tenure Track	10	-	-	3	13	23%
RACE/ETHNICITY						
African American/Black	6	4	-	-	10	18%
American Indian or Alaskan Native	-	-	-	-	-	0%
Asian	-	1	-	-	1	2%
Caucasian/White	20	14	-	8	42	75%
Hispanic or Latino/a	-	-	-	-	-	0%
Native Hawaiian or Other Pacific Islander	-	-	-	-	-	0%
Two or More Races	-	3	-	-	3	5%
Unknown/Not Reported	-	-	-	-	-	0%
GENDER						
Female	25	21	-	8	54	96%
Male	1	1	-	-	2	4%
TOTAL FACULTY	26	22	-	8	56	100%

¹ General Administrators include the Provost and VPAA, Associate Vice Presidents, Director of Education Abroad, Chief Administrative Officer of Douglasville, Vice President for Innovation and Research, the Provost Fellow for Student Success, and Director of Ombuds Services.

² Academic Administrators include Deans, Associate and Assistant Deans, Department Chairs, Associate and Assistant Department Chairs, and Academic Directors.

Source: Office of the Provost and Vice President for Academic Affairs

UNIVERSITY COLLEGE FALL 2022

	TEACHING FACULTY		ADMINISTRATORS		TOTAL	PERCENT
	FULL-TIME	PART-TIME	GENERAL ¹	ACADEMIC ²		
Professor	7	-	-	2	9	11%
Associate Professor	10	-	-	3	13	16%
Assistant Professor	3	-	-	-	3	4%
Instructor	4	18	-	-	22	28%
Lecturer	32	-	-	-	32	41%
HIGHEST DEGREE EARNED						
Doctorate	25	5	-	5	35	44%
Master's or Ed.S.	31	13	-	-	44	55%
Professional Bachelor's	-	-	-	-	-	1%
TENURE STATUS						
Tenured	17	-	-	5	22	28%
Not on Tenure Track	36	18	-	-	54	68%
Tenure Track	3	-	-	-	3	4%
RACE/ETHNICITY						
African American/Black	2	3	-	1	6	8%
American Indian or Alaskan Native	-	-	-	-	-	0%
Asian	3	-	-	-	3	4%
Caucasian/White	50	14	-	4	68	86%
Hispanic or Latino/a	1	-	-	-	1	1%
Native Hawaiian or Other Pacific Islander	-	-	-	-	-	0%
Two or More Races	-	-	-	-	-	0%
Unknown/Not Reported	-	1	-	-	1	1%
GENDER						
Female	33	7	-	1	41	41%
Male	23	11	-	4	38	48%
TOTAL FACULTY	56	18	-	5	79	100%

¹ General Administrators include the Provost and VPAA, Associate Vice Presidents, Director of Education Abroad, Chief Administrative Officer of Douglasville, Vice President for Innovation and Research, the Provost Fellow for Student Success, and Director of Ombuds Services.

² Academic Administrators include Deans, Associate and Assistant Deans, Department Chairs, Associate and Assistant Department Chairs, and Academic Directors.

Source: Office of the Provost and Vice President for Academic Affairs

LIBRARY FALL 2022

	TEACHING FACULTY		ADMINISTRATORS		TOTAL	PERCENT
	FULL-TIME	PART-TIME	GENERAL ¹	ACADEMIC ²		
Professor	7	-	-	-	7	64%
Associate Professor	3	-	-	1	4	36%
Assistant Professor	-	-	-	-	-	0%
Instructor	-	-	-	-	-	0%
Lecturer	-	-	-	-	-	0%
HIGHEST DEGREE EARNED						
Doctorate	1	-	-	-	1	9%
Master's or Ed.S.	9	-	-	1	10	91%
Professional Bachelor's	-	-	-	-	-	0%
TENURE STATUS						
Tenured	10	-	-	1	10	91%
Not on Tenure Track	-	-	-	-	-	0%
Tenure Track	-	-	-	-	1	9%
RACE/ETHNICITY						
African American/Black	1	-	-	-	1	9%
American Indian or Alaskan Native	-	-	-	-	-	0%
Asian	-	-	-	-	-	0%
Caucasian/White	9	-	-	1	10	91%
Hispanic or Latino/a	-	-	-	-	-	0%
Native Hawaiian or Other Pacific Islander	-	-	-	-	-	0%
Two or More Races	-	-	-	-	-	0%
Unknown/Not Reported	-	-	-	-	-	0%
GENDER						
Female	8	-	-	1	9	82%
Male	2	-	-	-	2	18%
TOTAL FACULTY	10	-	-	1	11	100%

¹ General Administrators include the Provost and VPAA, Associate Vice Presidents, Director of Education Abroad, Chief Administrative Officer of Douglasville, Vice President for Innovation and Research, the Provost Fellow for Student Success, and Director of Ombuds Services.

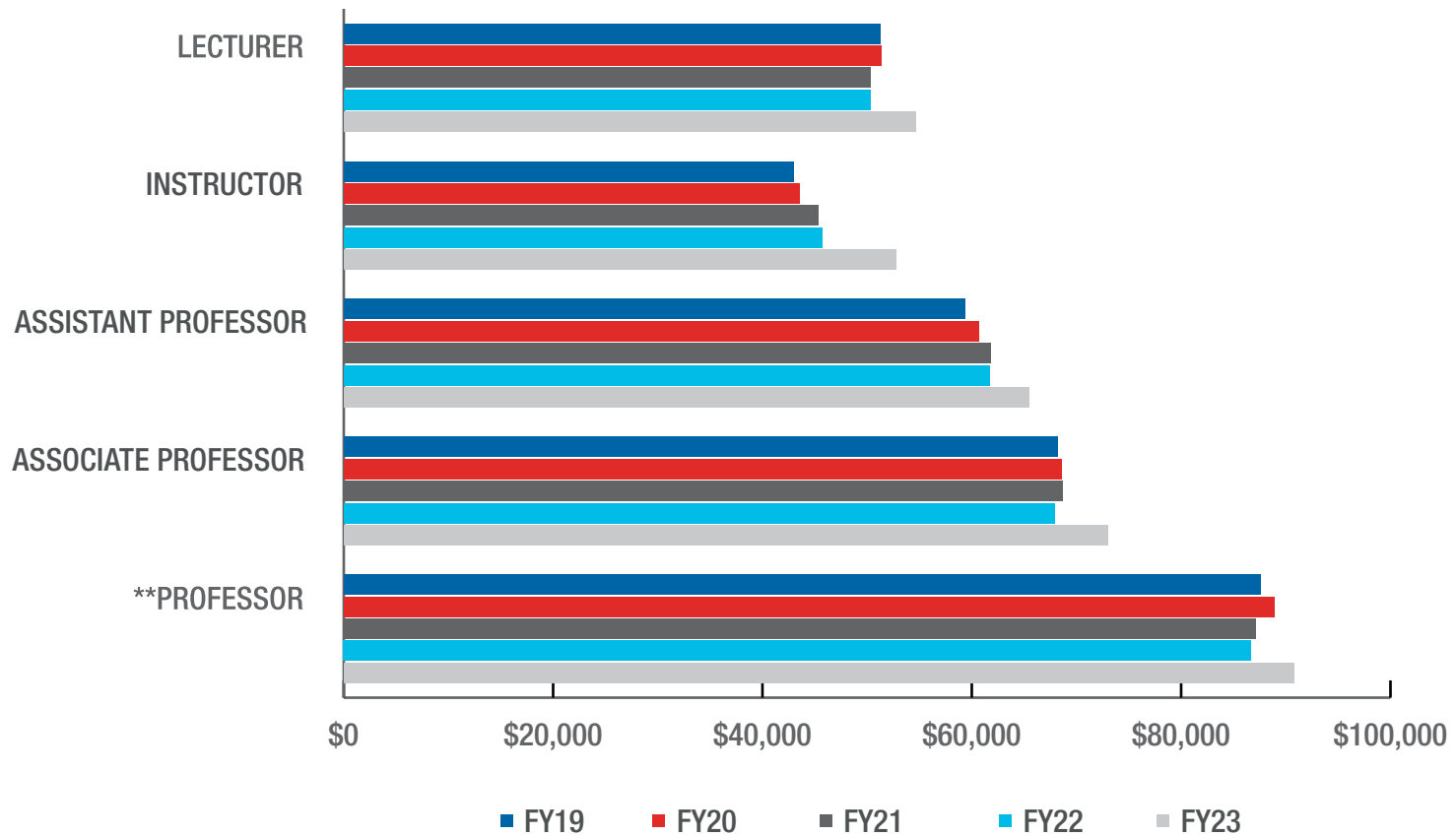
² Academic Administrators include Deans, Associate and Assistant Deans, Department Chairs, Associate and Assistant Department Chairs, and Academic Directors.

Source: Office of the Provost and Vice President for Academic Affairs

AVERAGE FACULTY SALARY

	FY 2019		FY 2020		FY 2021		FY 2022		FY 2023	
	NO.	AVG	NO.	AVG	NO.	AVG	NO.	AVG	NO.	AVG
**Professor	134	87,610	140	88,896	138	87,129	163	86,682	172	90,784
Associate Professor	135	68,177	134	68,592	122	68,629	110	67,927	107	72,966
Assistant Professor	129	59,383	136	60,684	119	61,750	101	61,652	98	65,470
Instructor	82	42,931	65	43,517	50	45,282	39	45,696	25	52,728
Lecturer	76	51,268	80	51,300	23	50,317	91	50,267	87	54,661
ALL FACULTY	556	\$64,496	555	\$66,139	512	\$66,691	504	\$67,711	489	\$73,440

FIVE-YEAR AVERAGE FACULTY SALARY BY RANK



Note: Faculty totals include all full-time teaching faculty, librarians, and other (f-t) faculty with temporary appointments. Does not include part-time faculty.

**Professor category includes Regent's Professor title and salary

Source: Office of the Provost and Vice President for Academic Affairs



190601

DATE October 20, 2022

PAY TO THE ORDER OF



UNIVERSITY OF WEST GEORGIA

\$ 1,593,942.83

One million five hundred, ninety-three thousand, nine hundred forty two & 83/100 DOLLARS

MEMO A Day 2022 - 40th Anniversary

FINANCIALS

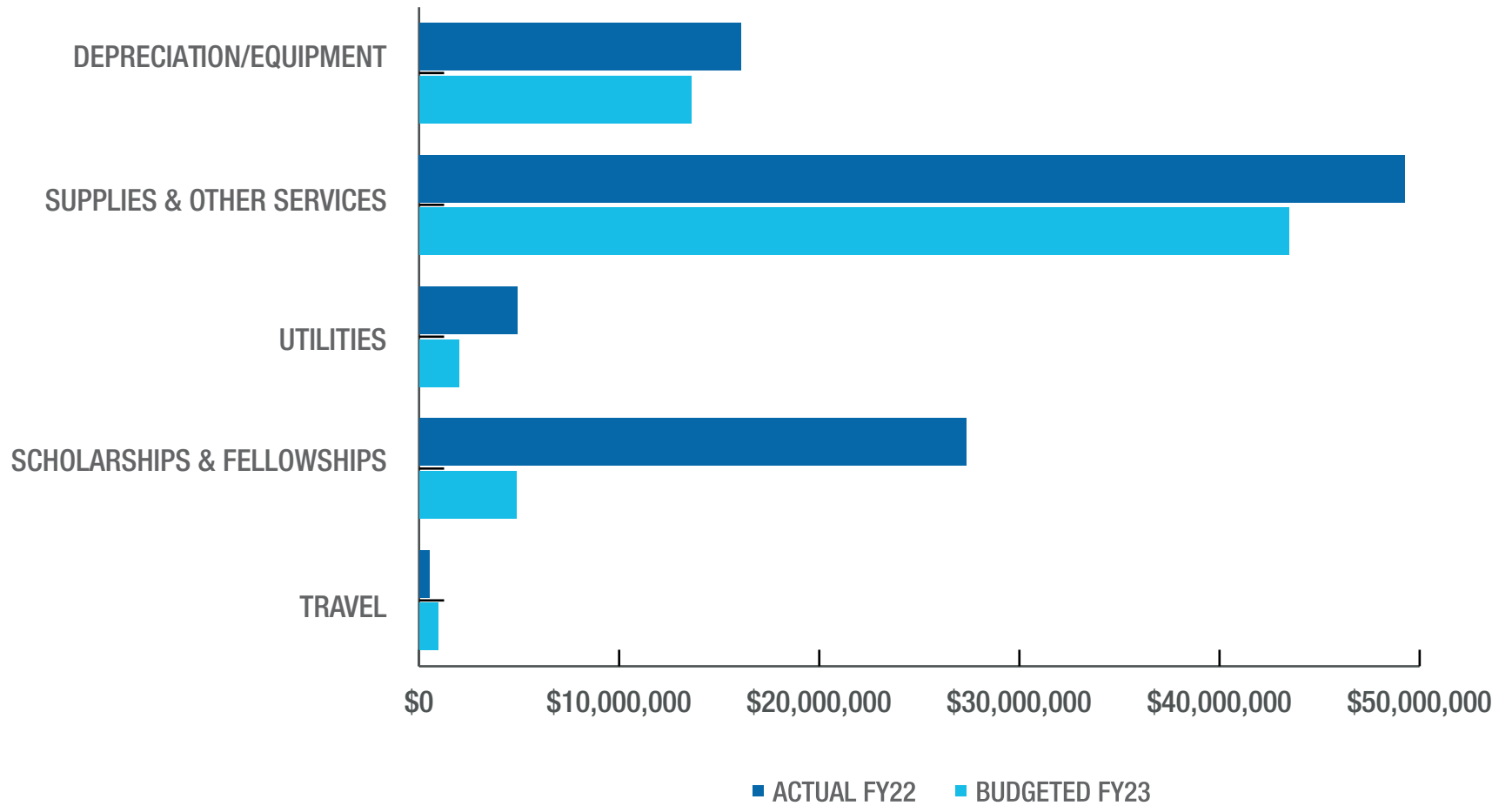
OPERATING EXPENSES

	FY 2021 JUNE 30, 2021	FY 2022 JUNE 30, 2022	FY 2023 JULY 1, 2022
OPERATING EXPENSES	ACTUAL	ACTUAL	BUDGETED
Salaries			
Faculty	\$44,208,664	\$46,629,780	\$47,482,160
Staff	\$52,807,559	\$53,078,921	\$60,507,328
Benefits	\$54,383,732	\$29,779,143	\$40,239,779
Other Personal Services	\$529,770	\$513,350	\$2,568,340
Travel	\$55,310	\$517,332	\$943,110
Scholarships and Fellowships	\$18,883,586	\$27,339,166	\$4,868,284
Utilities	\$3,986,397	\$4,912,358	\$1,987,661
Supplies and Other Services	\$43,172,271	\$49,262,389	\$43,473,201
Depreciation/Equipment	\$16,100,825	\$16,067,890	\$13,604,028
Unallocated	-	-	-
TOTAL OPERATING EXPENSES	\$234,128,114	\$228,100,329	\$215,673,891
NON-OPERATING EXPENSES			
Interest Expense (Capital Assets)	\$7,074,729	\$6,804,486	-
TOTAL EXPENSES	\$241,202,843	\$234,904,815	\$215,673,891

Note: Table does not include graduate assistants' salaries.

Source: Office of Budget Services and Office of the Controller

NON-PERSONAL SERVICES OPERATING EXPENSES



EXPENSES BY CLASSIFICATION

	FY 2021 JUNE 30, 2021	FY 2022 JUNE 30, 2022	FY 2023 JULY 1, 2022
OPERATING EXPENSES	ACTUAL	ACTUAL	BUDGETED
Instruction	\$77,772,573	\$79,535,825	\$83,049,594
College of Arts & Humanities	-	-	-
College of Science & Mathematics	-	-	-
College of Social Sciences	-	-	-
College of Arts, Culture, and Scientific Inquiry	\$21,411,710	\$19,987,876	\$20,919,636
School of Communication, Film, and Media	\$1,571,615	\$1,890,194	\$1,935,600
Richards College of Business	\$8,620,378	\$8,751,694	\$9,479,886
College of Education	\$8,273,653	\$8,443,133	\$9,081,150
Tanner Health System School of Nursing	\$4,975,444	\$4,946,783	\$5,061,867
University College	\$5,379,106	\$5,517,955	\$5,488,645
Other Instruction	\$27,540,667	\$29,998,190	\$31,082,810
Research	\$2,059,385	\$2,003,288	\$1,303,513
Public Service	\$244,927	\$312,819	\$370,995
Academic Support	\$25,381,047	\$25,571,831	\$26,682,719
Student Services	\$14,845,739	\$15,374,024	\$15,960,589
Student Activities	\$1,621,033	\$1,672,629	\$3,356,395
Intramural	\$23,568	\$15,668	-
Social & Entertainment Activities	\$337,784	\$165,373	-
Student Government	\$5,234	\$4,351	-
Student Publications	\$17,941	\$2,088	-
Scholarships, Study Abroad	-	\$82,306	\$132,140

EXPENSES BY CLASSIFICATION

	FY 2021 JUNE 30, 2021	FY 2022 JUNE 30, 2022	FY 2023 JULY 1, 2022
OPERATING EXPENSES	ACTUAL	ACTUAL	BUDGETED
Other Programs/Unassigned	\$1,455,597	\$1,402,843	\$3,224,255
Institutional Support	\$42,802,963	\$24,775,457	\$26,216,086
Plant Operations and Maintenance	\$20,090,048	\$20,903,163	\$13,771,352
Safety and Security	\$3,405,960	\$3,753,449	\$3,487,387
Scholarships and Fellowships	\$16,774,667	\$25,152,834	\$4,188,836
Auxiliary Enterprises	\$29,129,772	\$29,045,010	\$37,286,425
Student Housing	\$10,139,453	\$10,363,759	\$16,342,754
Food Services	\$6,973,639	\$7,668,710	\$7,972,560
Stores and Shops	\$1,665,615	\$1,665,372	\$2,006,483
Intercollegiate Athletics	\$3,196,130	\$3,456,839	\$5,144,621
Scholarships, Athletics	\$1,607,916	\$1,503,981	\$653,148
Other Service Units	\$5,547,019	\$4,386,349	\$5,166,859
TOTAL OPERATING EXPENSES	\$234,128,114	\$228,100,3293	\$215,673,891
NON-OPERATING EXPENSES			
Interest Expense (Capital Assets)	\$7,074,729	\$6,804,486	-
TOTAL EXPENSES	\$241,202,843	\$234,904,815	\$215,673,891

Note: Includes all funding sources, internal revenue, special initiatives, departmental sales and service, and sponsored operations.

Source: Office of Budget Services and Office of the Controller

UNIVERSITY REVENUE BY SOURCE

	FY 2021 – JUNE 30, 2021	FY 2022 – JUNE 30, 2022	FY 2023 – JULY 1, 2022
OPERATING REVENUE	ACTUAL	ACTUAL	BUDGETED
Tuition and Fees	\$98,812,478	\$96,789,800	\$79,721,048
Less: Scholarship Allowances	\$(19,881,541)	\$(19,852,584)	\$(18,266,677)
Grants and Contracts			
Federal	\$1,177,790	\$1,228,924	-
State	\$444,570	\$381,837	-
Other	\$1,861,333	\$2,080,989	-
Sales and Services	\$345,836	\$777,465	\$420,988
Rents and Royalties	\$17,503	\$126,981	\$103,913
Auxiliary			
Residence Halls	\$13,777,906	\$12,476,803	\$13,066,993
Bookstore	\$1,593,321	\$1,513,057	\$1,695,536
Food Services	\$6,085,338	\$6,570,400	\$7,401,372
Parking/Transportation	\$1,399,216	\$1,314,669	\$1,284,805
Health Services	\$1,787,272	\$1,733,745	\$1,739,572
Intercollegiate Athletics	\$5,547,869	\$5,306,712	\$5,156,110
Other Organizations	\$269,983	\$646,257	\$1,934,543
Other	\$2,590,478	\$2,894,536	\$6,931,227
TOTAL OPERATING REVENUE	\$116,029,352	\$113,989,591	\$101,189,430

	FY 2021 – JUNE 30, 2021	FY 2022 – JUNE 30, 2022	FY 2023 – JULY 1, 2022
NON-OPERATING REVENUE		ACTUAL	
State Appropriations	\$61,068,804	\$73,519,427	\$81,715,143
Federal Stimulus - Stabilization Funds	-	-	-
Grants and Contracts ¹	\$43,611,697	\$58,650,615	\$26,052,340
Gifts	\$1,111,711	\$2,892,884	\$107,429
Investment Income	\$86,758	\$46,443	\$63,518
Other	\$(258,375)	\$(11,750)	\$6,546,031
TOTAL NON-OPERATING REVENUE	\$105,620,595	\$135,097,619	\$114,484,461
CAPITAL GIFTS AND GRANTS²			
State	\$595,188	\$24,885,741	-
Other	\$32,000	\$727,186	-
TOTAL CAPITAL GIFTS AND GRANTS	\$627,188	\$25,612,927	-
TOTAL REVENUES	\$222,277,135	\$274,700,137	\$215,673,891

Note: Includes all funding sources, internal revenue, special initiatives, departmental sales and service, and sponsored operations.

¹ Grants and contracts do not include federal tuition scholarships. For budgeting purposes, grants and contracts are not separated between operating and non-operating revenue.

² Capital Gifts and Grants are not included in the original budget.

Source: Office of Budget Services and Office of the Controller

CONDENSED STATEMENT OF NET ASSETS

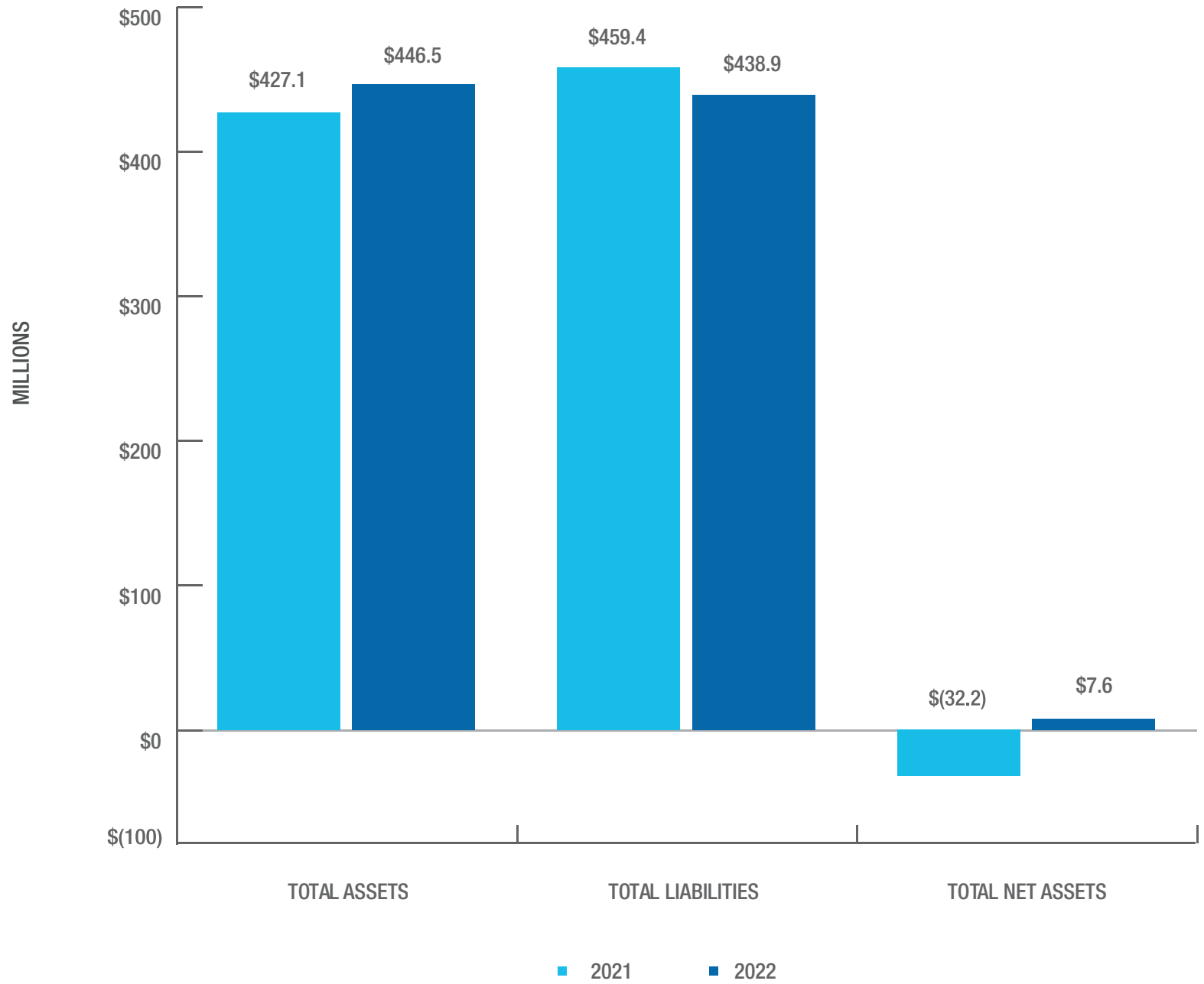
FISCAL YEAR	2021	2022
ASSETS¹		
Current Assets	\$66,069,268	\$81,808,502
Capital Assets, net	\$288,354,750	\$301,211,176
Other Assets	\$72,708,682	\$63,440,117
TOTAL ASSETS	\$27,132,700	\$446,459,795
LIABILITIES²		
Current Liabilities	\$21,497,962	\$22,107,509
Noncurrent Liabilities	\$437,869,128	\$416,791,354
TOTAL LIABILITIES	\$459,367,090	\$438,898,863
NET ASSETS		
Invested in Capital Assets, Net of Debt	\$137,698,813	\$156,392,556
Restricted – Expendable	\$4,510,385	\$3,847,295
Unrestricted	\$(174,443,588)	\$(152,678,919)
TOTAL NET ASSETS	\$(32,234,390)	\$7,560,932

¹ Assets are cash, investments, receivables, prepaid items, inventories, capital equipment, etc.

² Liabilities are accounts payable, deposits from others to the University (i.e., deposits for room rentals, breakage, etc.), and payroll deductions.

Source: Office of Budget Services and Office of the Controller

TOTAL ASSETS, LIABILITIES, AND NET ASSETS
FY 2021 VS FY 2022



STUDENT TUITION AND FEES

The cost of attending the University can vary, depending on a student's classification, residency status, method of instruction, and/or degree program. All tuition and related fees are posted on the Office of Student Accounts and Billing Services' website: westga.edu/student-services/studentaccounts/index.php

TUITION AND FEES FOR THE 2022-2023 ACADEMIC YEAR		
	UNDERGRADUATE	GRADUATE ¹
In-State Tuition	\$4,371	\$4,338
Out-of-State Tuition	\$15,426	\$16,830
Required Fees	\$1,570	\$1,570

Note: Figures based on full-time on-campus students enrolled in the minimum number of classes to be considered full-time for both Fall and Spring semesters. IPEDS defines full-time undergraduate enrollment as a minimum of 12 credit hours and full-time graduate enrollment as a minimum of 9 credit hours. Totals do not include graduate program differential fees charged by some programs or tuition differences based on course delivery method.

Source: Office of Student Accounts and Billing Services and Office of Institutional Effectiveness and Assessment

RESIDENT INSTRUCTION EXPENDITURES

FISCAL YEAR	RESIDENT INSTRUCTION EXPENDITURES ¹	FALL TERM FTE ENROLLMENT ²	TOTAL EXPENDITURES PER FTE STUDENT
2018	\$187,645,106	12,002	\$15,634
2019	\$193,201,640	11,437	\$16,893
2020	\$197,458,245	11,332	\$17,425
2021	\$188,531,570	10,490	\$17,973
2022	\$182,090,972	9,871	\$18,447

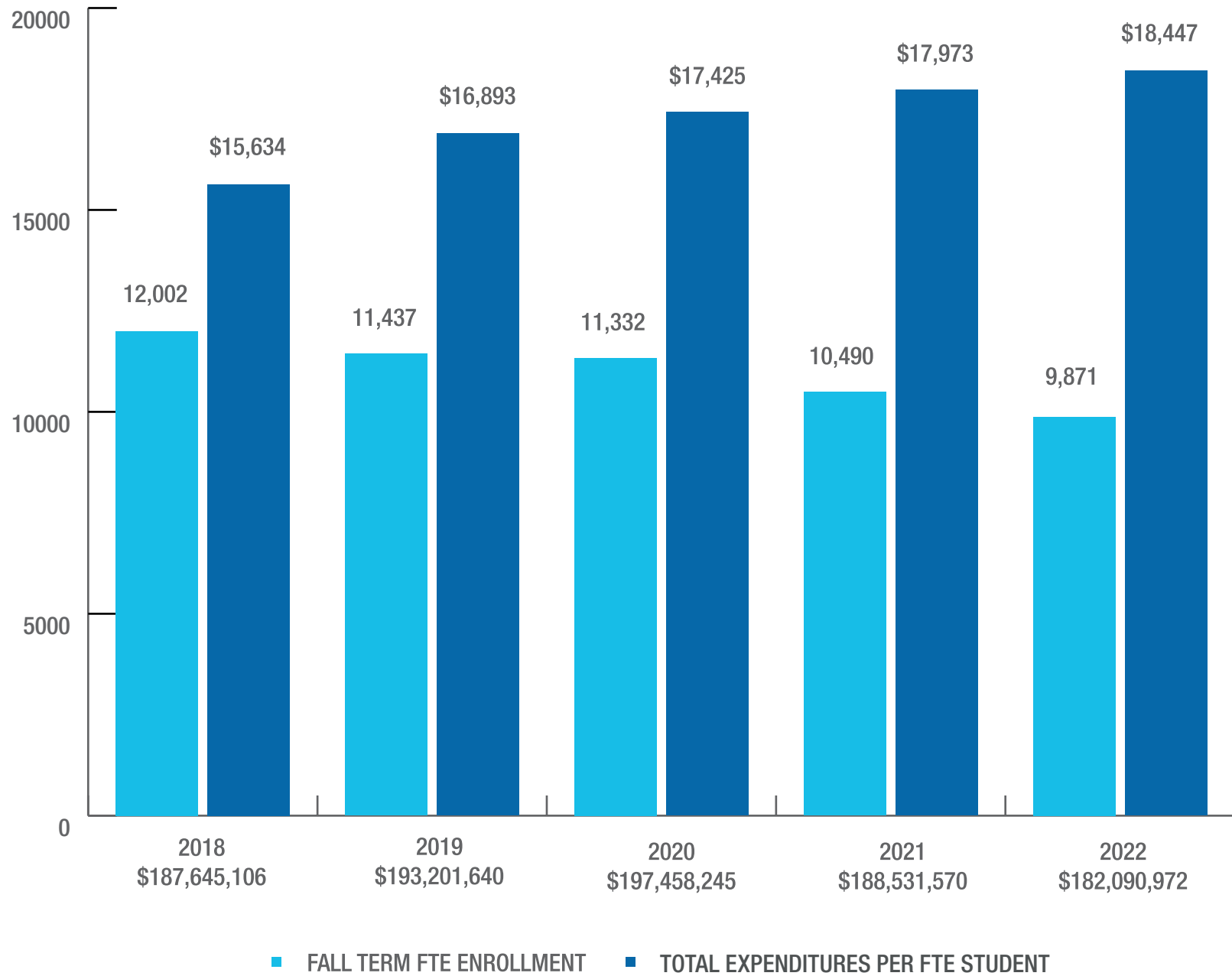
Note: FTE stands for Full-Time Equivalent.

¹ Calculated as Total Operating Expenses per the Annual Financial Report less Auxiliary Services and Student Activities.

² Official Census Data submitted to the University System of Georgia.

Source: Office of the Controller and Institutional Effectiveness and Assessment

RESIDENT INSTRUCTION EXPENDITURES PER FISCAL YEAR





UNIVERSITY OF WEST GEORGIA